

## NOTES OF THE SYDNEY MODEL RAILWAY SOCIETY

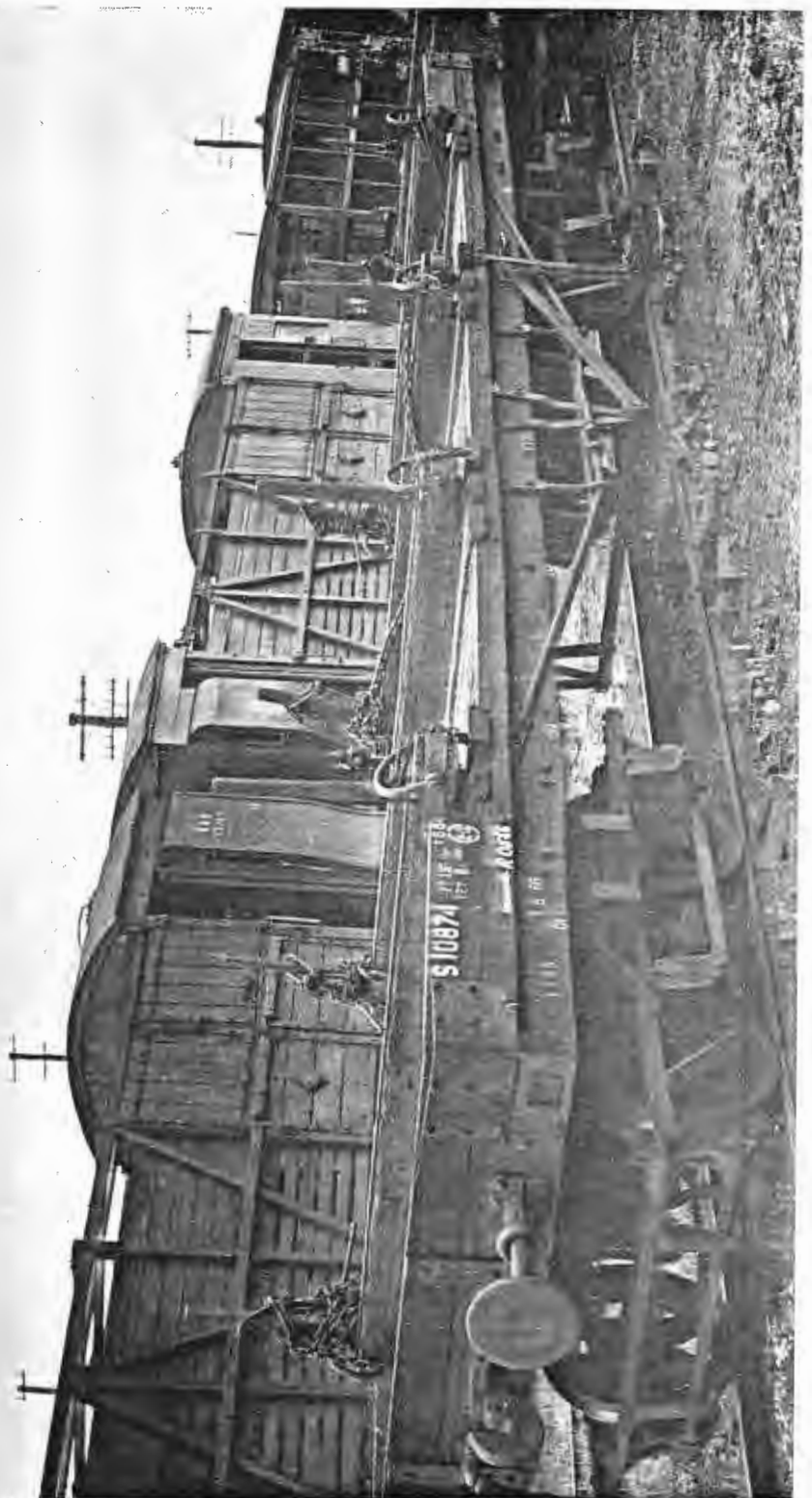
Interest in meetings of the Society have revolved around the further maintenance work on the O gauge layout with the result that on some Monday evenings the attendance has fallen off whilst the professionals iron out the problems.

Please note: The Society's annual general meeting will be held on 20 July!

**O GAUGE.** Paul Simpson has had an American type diesel loco on a test run. It is a Santa Fe finished in royal blue and yellow and appropriately lettered. Charlie Weathers also has been test running his U 105 class but the motor performed unsatisfactorily and will be replaced. He also showed his Garratt underframe and his 36 class mentioned in a recent Yardmaster is now in regular service. Other new O gauge locos to appear on the layout are a VR "R" class 4-6-4, and an American type 2-8-2 painted in dark green with cream lining and a prancing horse emblem embellishing the tender.

**HO GAUGE.** On the HO gauge layout where operation is the main pre-occupation a slow start towards timetable working has dampened interest of some, but the number of new models coming in each night for trial running and appraisal has delayed the eager beavers from getting operation off to the early start necessary for a full timetable run. In past weeks Arthur Wheatley has placed his remotored pair of Budd cars in service and the Pittman motor conversion has revitalised these flyers. Bob Gallagher's set of NSWGR old-time open end suburban cars of the FO and related codes have also brought a new look to the available rolling stock picture. Most of the longer Athearn and other coaches which members had loaned for Club operation have now been removed. Ken Smith's 58 loco sans rods looked an impressive near-complete model still in the brass, and with Bob Gallagher's 19 class and the new acquisitions in the 32 class which several members obtained from Beros' hobbyshop will bring the aimed "all NSWGR" goal a bit closer.

Bob has weighted his new Jap. NSWGR 32 and gave it a performance test on the Society's layout amidst great interest. Ken Foran's "BOB" set of NSWGR cars were again seen running recently, four cars permanently coupled. A PHG from the John Watson shops also aroused favourable comment.



**OUR PLAN . . . A Queensland Railways 'S' Class  
Timber Wagon. Photo courtesy of Queensland  
Railways, plan by Norm Coughlan.**

## KKB (LIVESTOCK) WAGONS

Description: Eight-wheeled Livestock Van, Wood Construction, Plain Bearings, suitable for Express Freight and Goods Trains, Guards and Drivers Compartments.

Carrying capacity ..... 10 head

Average tare ..... 12.5 tonnes

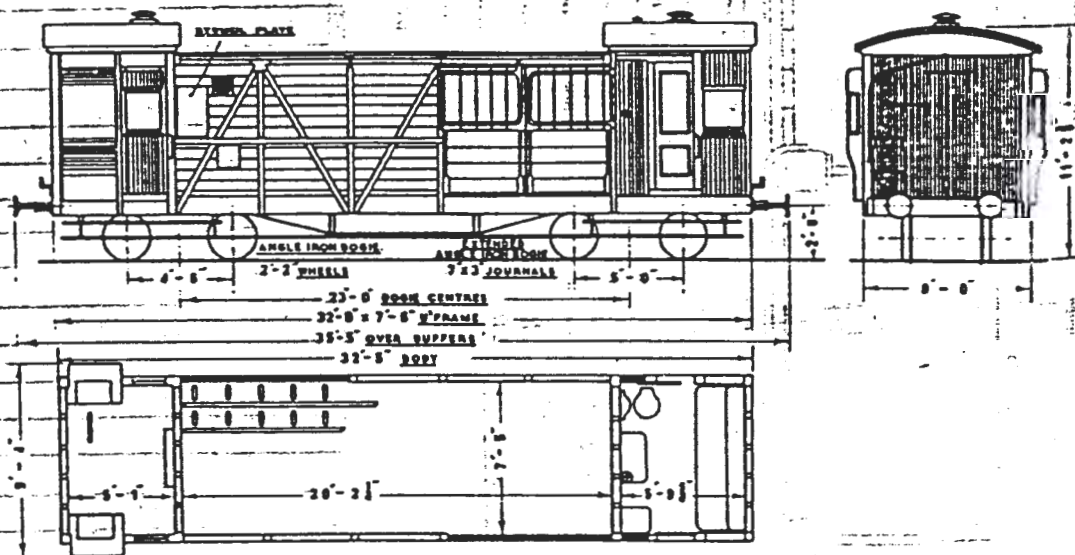
Inside dimensions Imperial Length 20'2½" Width 7'5"  
Metric (mm) Length 6 155 Width 2 260

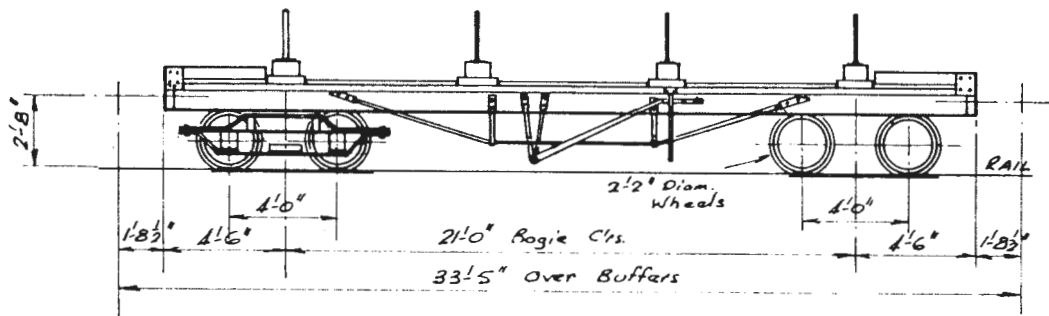
Doorway Imperial Width 7'10"  
Metric (mm) Width 2 390

Unit length ..... 2.1

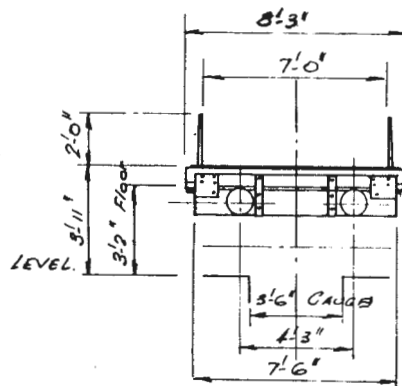
Drawgear class ..... D4

No. in traffic ..... 22

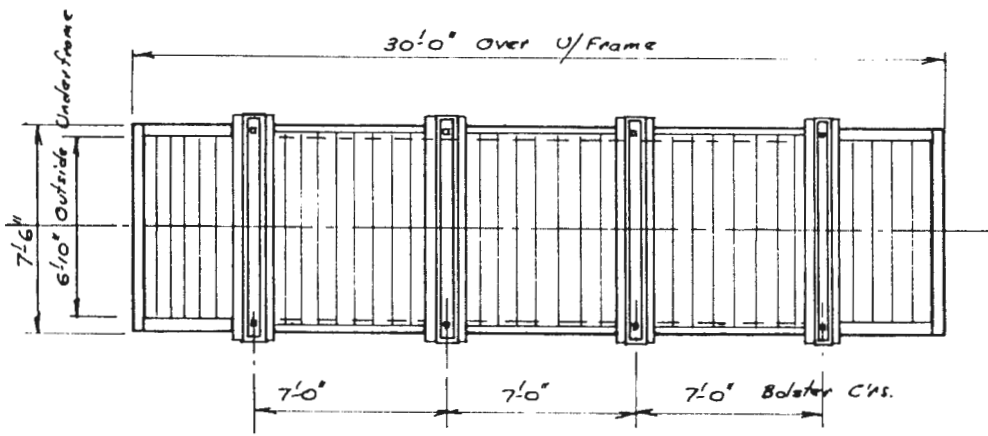




SIDE ELEVATION



END ELEV.



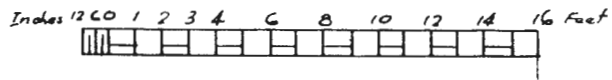
PLAN

NOTES

All Timber Construction

COLOURS:- Ferric Red

White Lettering.



SCALE

our plan

QUEENSLAND RAILWAYS	
3 1/2" GAUGE.	
TIMBER WAGON	
CLASS 'S'	
DRAWN	N. Gough
DATE	OCT '66
S.C.R. PUBLICATIONS	
PLAN & PRINT SERVICE	