

List of tramways in Queensland

List of tramways in Queensland provides three separate lists, each in alphabetical order of the key identifier. They are:

- Non sugar cane tramways, ordered by Tramway Name as contained in Wikipedia articles.
- Sugar cane tramways, ordered by Sugar Mill Name, of which not all mills have a Wikipedia article.
- Miscellaneous tramways for which only limited information is available, ordered by Enterprise Name as contained in Wikipedia articles

This list article does not include the [Brisbane tramway network](#), the [Brisbane Tramway Museum](#), the [Gold Coast light rail](#), or the [Rockhampton steam tram network](#).

Non sugar cane tramways

Except where shown otherwise these tramways had a gauge of 3 ft 6 in (1,067 mm). They were regarded as tramways because of their lighter construction, and because they did not compete with government railways. The Mapleton Tramway, a former sugar cane tramway, is included in this list because it has its own article, and is heritage listed.

Tramway lengths are shown in miles to conform to other Australian railway articles. Where the source shows the distance in kilometres some small difference may occur due to rounding.

Tramway name	Owner / operator	From locality	To locality	From year	To year	Length	Gauge	Notes
Aramac	Aramac Shire	Aramac	Barcaldine	1913	1975	41 mi (66 km)	3 ft 6 in (1,067 m m)	Now a heritage listed station and museum at Aramac.
Ballara	Hampton mine	Devoncourt (former train station)	Ballara (former mining town)	1915	1926	21.8 mi (35 km)	3 ft 6 in (1,067 m m)	Served the "Wee Macgregor" mine, in the locality of Kuridala. This line joined a 1.85 mi (3 km) tramway, with 2 ft (610 mm) gauge.
Beaudesert Shire	Beaudesert Shire	Beaudesert	Lamington and Rathdowney	1903	1944	39.36 mi (63.34 km)	3 ft 6 in (1,067 m m)	With a branch line from Tabooba to Rathdowney.
Belmont	Belmont Shire	Norman Park	Belmont	1912	1926	4.3 mi (6.9 km)	3 ft 6 in (1,067 m m)	Passenger tramway.
Big Pineapple	The Big Pineapple	Loop around the property		1971	N/A	0.6 mi (1.0 km)	2 ft (610 mm)	Tourist tramway.
Buderim	Maroochy Shire	Palmwoods railway station	Buderim	1914	1935	7.2 mi (11.6 km)	2 ft (610 mm)	Built to carry farm produce from Buderim. Now heritage listed remnants at Buderim.

AMRA Weekly News — 28 February 2021

28TH FEBRUARY 2021

Cooloola	Brisbane Saw Mills	Broutha Scrub, Cooloola	Poverty Point, Cooloola	1874	1884	8.5 mi (13.7 km)	2 ft (610 mm) (assumed)	Built to carry timber to Tin Can Bay. Now heritage listed remnants ^[2] in Great Sandy National Park.
Innisfail	Johnstone Shire	Mourilyan Harbour	Mourilyan	1883	1997	6.8 mi (11 km)	2 ft (610 mm)	Built to carry materials from Mourilyan Harbour to build the Mourilyan sugar mill. Later expanded into a sugar cane tramway network to service the Mourilyan mill.
Laheys	Laheys Sawmill	Canungra	Upper Coomera	1900	1933	16.5 mi (26.6 km)	3 ft 6 in (1,067 mm)	Now a heritage listed tunnel at Canungra.
Mapleton	Moreton Central Sugar Mill	Nambour	Mapleton	1897	2003	26.1 mi (42.0 km)	3 ft 6 in (1,067 mm)	Expanded to a network of lines converging on Nambour. Now a heritage listed tramway segment in Nambour, and Tramway Lift Bridge over Maroochy River..
Mill Point	McGhie, Luya and Co.	Near Kin Kin Creek	Mill Point sawmill, Como	1870s	1890s	4 mi (6.4 km)	3 ft 6 in (1,067 mm)	Timber haulage near Lake Cootharaba, originally using timber rails. Heritage listed remnants at Como.
Stannary Hills	Stannary Hills Mines and Tramway Company	Boonmoo	Stannary Hills	1902	1941	Unknown	2 ft (610 mm)	Built for tin mining. Now heritage listed remnants at Irvinebank, and a rail trail to Boonmoo. Refer to Chillagoe Railway & Mining Co. for a map showing Boonmoo, Stannary Hills, Irvinebank and Rocky Bluff, and the tramways between them.
		Stannary Hills	Irvinebank	1907	1936	7.5 mi (12.1 km)(est)		
		Stannary Hills	Rocky Bluff (a former mining town in the locality of Watsonville)	1902	1926	6.8 mi (10.9 km)		

28TH FEBRUARY 2021

AMRA Weekly News — 28 February 2021

Right: Aramac Tramway



BELOW: BELMONT TRAMWAY 1912-1926 TRAMWAYS ACT OF 1882 GAVE LOCAL COUNCILS IN QLD POWERS TO BUILD RAILWAYS WHICH DID NOT COMPETE WITH QR.



Above: Beaudesert Station and Yard

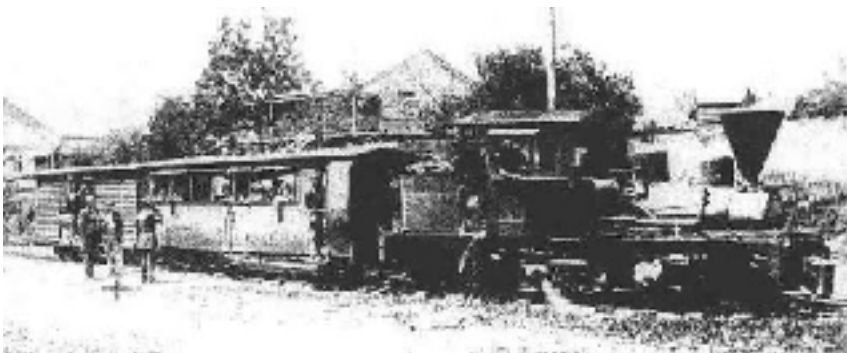
Left: Palmwoods - Buderim Tramway



Below: Cooloola Tramway - look familiar!



Left: Mapleton Tramway



28TH FEBRUARY 2021

Right: Lahey's Timber Tramway, Cunungra



Below & Right: Stannary Hills Tramway



Above: Innisfail Tramway

Right: Map of the Mill Point Tramway

More Tramways Next Week