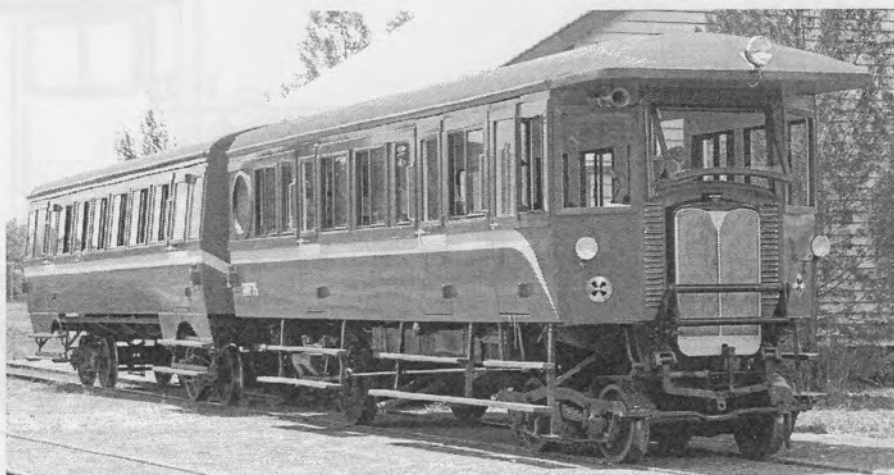


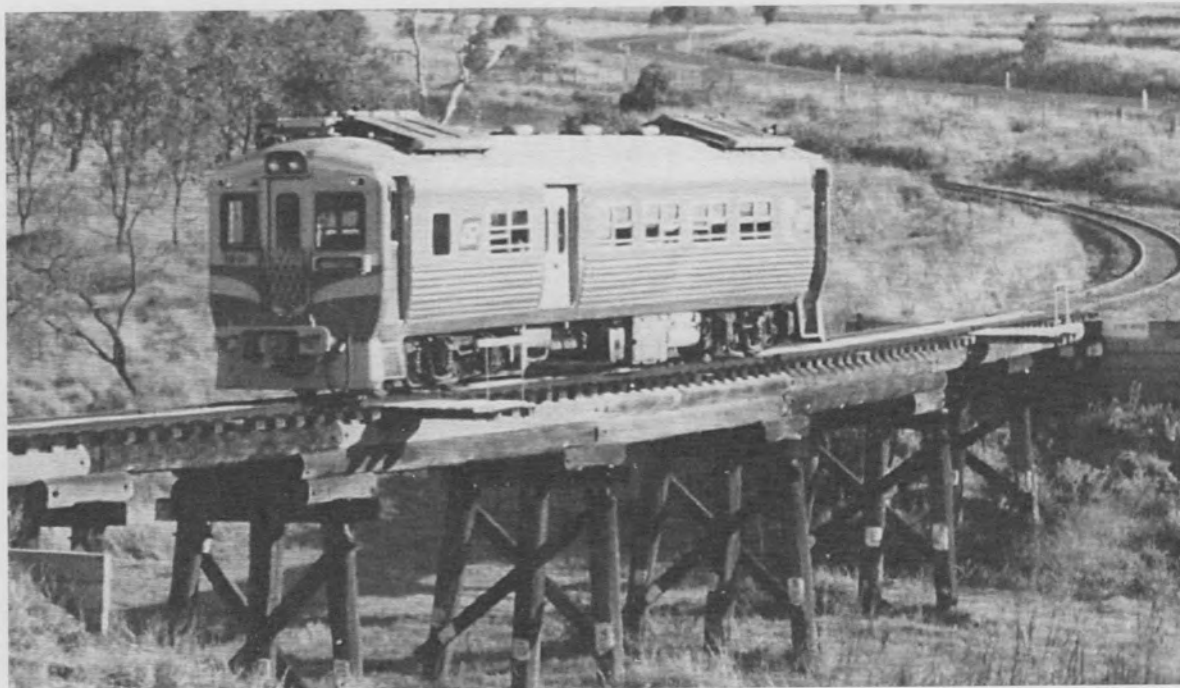
Late 1900's - A10 #6 (on loan from QR) and PB15 #738 double head out of Cabanda (Rosewood Railway Museum)

Photo: Jim Hutchinson



RM 76 and trailer - MVHR

Photo: Jim Hutchinson



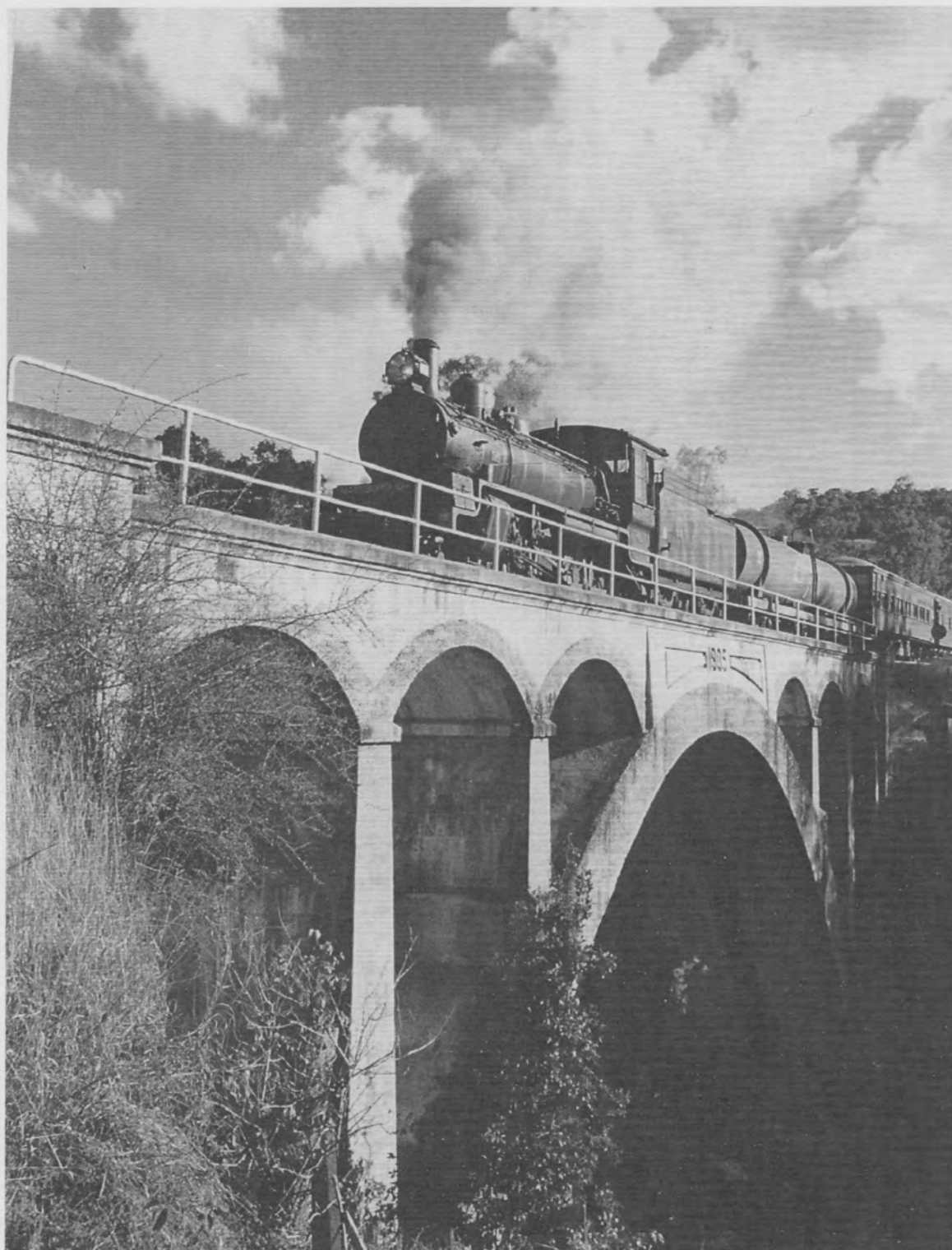
1901 near Tingoorra (Kingaroy Branch) on an AHRs tour – October 2000

Photo: Jim Hutchinson



QR railmotors 2036 and 2034 sit alongside NSW Rail Motor Society's 621 / 721 at Roma Street Station – 17th June 2012

Photo: Jim Hutchinson



Preserved C 17 #974 leads an ARHS tour train eastward towards Biggenden across the heritage listed Chowey Bridge (Monto Branch) on 15th August 1996

Photo: Jim Hutchinson