

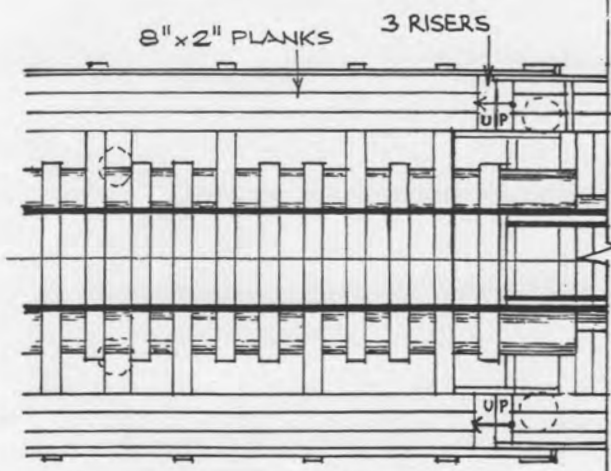
ELEVATION - APPROACH AND FIRST BIN

SECTION THROUGH BIN ALONG CENTRE-LINE

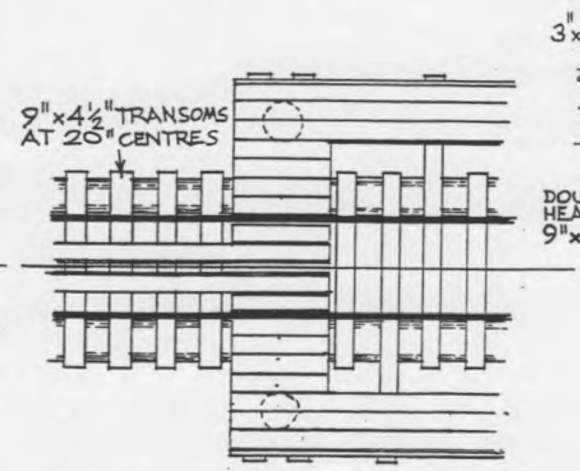
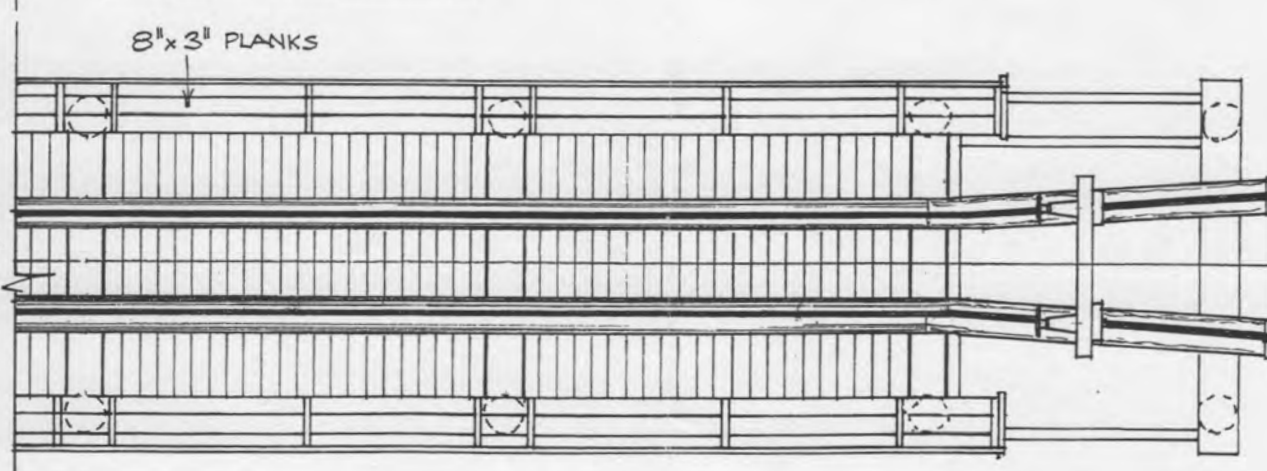
FRONT ELEVATION (TO TRACK)

SECTION THROUGH BIN

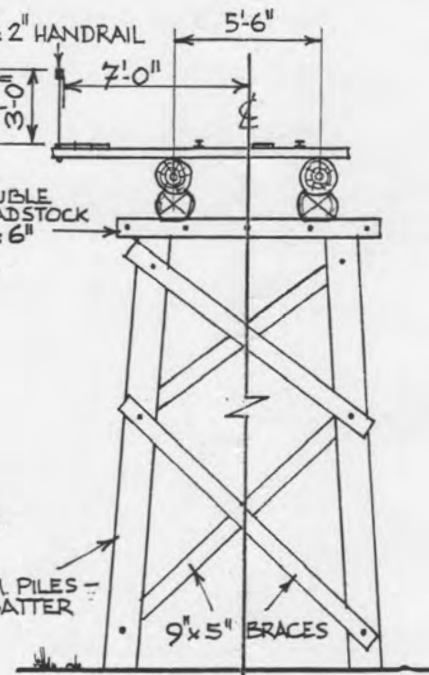
END SECTION / ELEVATION



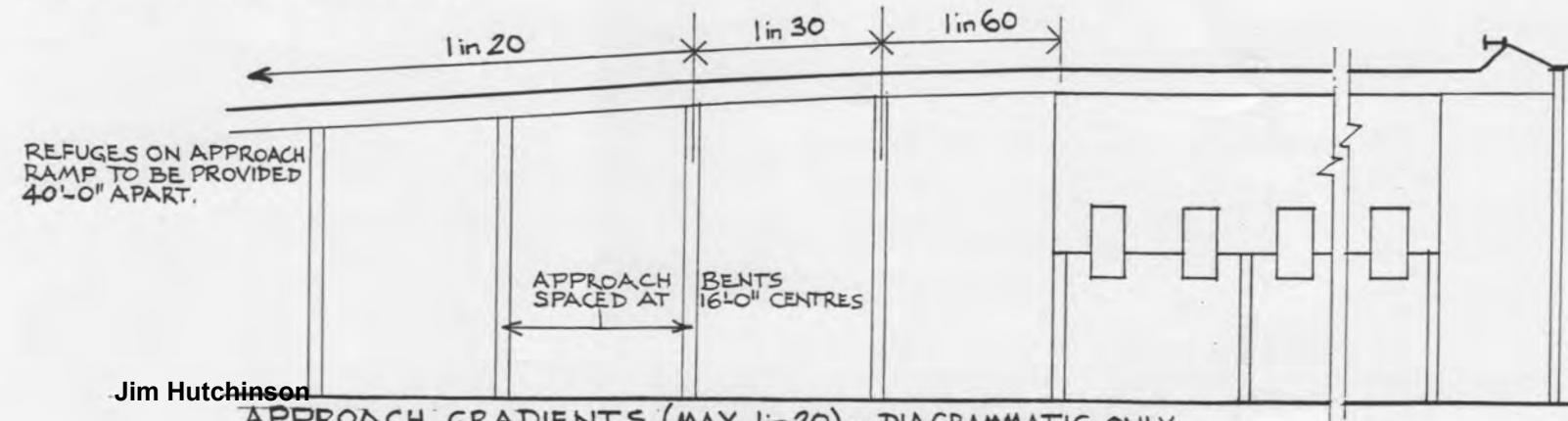
PLAN - APPROACH AND BINS



PLAN AT FIFTH BENT FROM BIN



TYPICAL APPROACH BENTS - SPACED AT 16'-0" CENTRES



APPROACH GRADIENTS (MAX 1 in 20) - DIAGRAMMATIC ONLY

NOTE:
 - ALL PILES 17" DIAMETER (MIN)
 - ALL GIRDERS 17" DIAMETER TRIMMED TO 12" DEEP OVER BEARING POINTS.
 - DRAWING BASED ON QR STANDARD SD104