

**Captions/Proof Sheets for 97 Alberta Coal Branch & related images  
to accompany Kodak PhotoCD and slides; A C Lynn Zelmer, photographer**

A selection of 100 35mm colour slides was sent to Kodak Australia for scanning to PhotoCD format as an experiment in c1997. Since the digital images were intended for use at a conference, appropriate images from outside the Coal Branch area were included to round out the conference presentation. The images covered a range of exposures from quite underexposed to slightly overexposed.

As might be expected, some of the resulting digital images were marginal (underexposed or overexposed slides will likely never yield good digital images). As well, two of the images had been reversed (13, 39), three of the slides submitted were not scanned and one of the images (47) was only partially scanned (the film likely shifted in the mount during handling).

The latter image has been rescanned (2006) and will be included with missing/additional related images in a subsequent package/CD.

**Slides sorted by caption**

- LZ\_22: Abandoned mine near Edson, long shot 8/66
- LZ\_23: Abandoned mine near Edson, medium shot 8/66
- LZ\_01: CN 208372, ex-reefer in work service, Robb 9/70
- LZ\_08: CN 4 outside-braced box cars in work train, Robb 9/70
- LZ\_05: CN 51654, ex-single dome tank car in work service, Robb 9/70
- LZ\_09: CN 67479, in work service, Robb 9/70
- LZ\_03: CN 67983, in work service, Robb 9/70
- LZ\_02: CN 68348, in work service, Robb 9/70
- LZ\_04: CN 69525, bunk car in work service, Robb 9/70
- LZ\_07: CN 69750, in work service, Robb 9/70
- LZ\_10: CN 69967, in work service, Robb 9/70
- LZ\_11: CN 70139, ex-caboose in work service, Robb 9/70
- LZ\_06: CN cars in work train, Robb 9/70
- LZ\_78: CN Camrose AB, small works buildings, 1973
- LZ\_75: CN Freight shed Drumheller, close-up end view, 1973
- LZ\_74: CN Freight shed Drumheller, end and partial front view, 1973
- LZ\_73: CN Freight shed Drumheller, trackside view with loading doors, 1973
- LZ\_76: CN Grain elevators Drumheller, at end of yard, looking east from station, 1973
- LZ\_79: CN Main line 4-8-2 locomotive 6060 on display at Jasper, 5/64
- LZ\_77: CN standard station, Camrose AB, 1973
- LZ\_90: CN switch stand, looking north down the Coalspur yard, 1968
- LZ\_72: CN trackside shed built from ties, Drumheller 1973
- LZ\_39: CN trestle: Converting wooden trestle to steel and concrete on CN mainline west of Edmonton, before 1968 (image reversed) (1 of 3)
- LZ\_40: CN trestle: Converting wooden trestle to steel and concrete on CN mainline west of Edmonton, before 1968 (2 of 3)
- LZ\_41: CN trestle: Converting wooden trestle to steel and concrete on CN mainline west of Edmonton, before 1968 (3 of 3)
- LZ\_38: CN trestle: Steel replacement trestle on CN mainline west of Edmonton, 1968 (1 of 2)

**Captions/Proof Sheets for 97 Alberta Coal Branch & related images  
to accompany Kodak PhotoCD and slides; A C Lynn Zelmer, photographer**

- LZ\_37: CN trestle: Steel replacement trestle on CN mainline west of Edmonton, 1968 (2 of 2)
- LZ\_82: CN work gang in the Yellowhead Pass area, crane with counterbalance weight, 1970
- LZ\_81: CN work gang in the Yellowhead Pass area, replacing a length of rail, 1970
- LZ\_83: CN work gang in the Yellowhead Pass area, spiking track, 1970
- LZ\_84: CN work gang in the Yellowhead Pass area, tie crane, 1970
- LZ\_12: Coal Branch Motors, Mercoal, likely 9/70
- LZ\_31: Coal Branch wooden trestle (near Robb?), 1968
- LZ\_32: Coal Branch wooden trestle deck (near Robb?), 1968
- LZ\_63: Coal Valley, erosion and gully at edge of overburden pile, 1970
- LZ\_45: Coal Valley, erosion at base of slag/overburden, 1970
- LZ\_57: Coal Valley, garbage and overburden piles, 1970
- LZ\_59: Coal Valley, likely looking south, along grade towards open pit mine, now water-filled, 1970
- LZ\_61: Coal Valley, looking north along grade; new telephone lines runs on poles at edge of trees to left of grade, road beyond, 1970
- LZ\_62: Coal Valley, looking north from the road/telephone line side of old yard, 1970
- LZ\_60: Coal Valley, looking south (?) across remains of yard and loading area, 1970
- LZ\_48: Coal Valley, looking south across abandoned open pit mines and overburden piles, 1970
- LZ\_58: Coal Valley, looking towards open pit mine, now water-filled, 1970
- LZ\_46: Coal Valley, looking west across the grade and subsistence, 1970
- LZ\_47: Coal Valley, looking west across the grade to the road, 1970 (partial image copied)
- LZ\_49: Coal Valley, new telephone line, likely looking north, 1970
- LZ\_42: Coal Valley, old adit (overgrown), 1970
- LZ\_43: Coal Valley, old adit (vertical), 1970
- LZ\_44: Coal Valley, remains of old house, 1970
- LZ\_86: Coalspur General Store, now residence, 1966
- LZ\_92: Coalspur, looking north down yard towards station, 1968
- LZ\_56: Coalspur mine buildings/tipple, looking south, 1968
- LZ\_54: Coalspur mine, hand operated points on mine tracks, 1966
- LZ\_55: Coalspur mine, link and pin coupling on wooden mining wagons, 1966
- LZ\_97: Coalspur mine, small building and stack of coal wagons, 1968
- LZ\_53: Coalspur mine, wooden mining wagon on mine tracks, 1966
- LZ\_52: Coalspur miner's shack, 1966
- LZ\_51: Coalspur roundhouse foundations and pit, 1968
- LZ\_50: Coalspur roundhouse foundations looking towards Coalspur station, 1968
- LZ\_96: Coalspur station from east side, 1968
- LZ\_95: Coalspur station from south side, 1966
- LZ\_94: Coalspur station from west side, 1968
- LZ\_93: Coalspur station, CN Train Order board, 1968
- LZ\_91: Coalspur weir looking across river to town, 1968
- LZ\_88: Coalspur, abandoned commercial building, 1966
- LZ\_87: Coalspur, abandoned store, 1966

**Captions/Proof Sheets for 97 Alberta Coal Branch & related images  
to accompany Kodak PhotoCD and slides; A C Lynn Zelmer, photographer**

- LZ\_89: Coalspur, looking north across the wye towards the Coalspur mine, 1968  
LZ\_85: Coalspur, semi-abandoned garage, 1966  
LZ\_20: Erith Tie piled ties and lumber, likely 9/70 (also see video)  
LZ\_21: Erith tie sawdust burner, likely 9/70 (also see video)  
LZ\_19: Erith Tie sawmill buildings left of burner, likely 9/70 (also see video)  
LZ\_18: Erith Tie sawmill buildings right of burner, likely 9/70 (also see video)  
LZ\_34: Farmer's sawmill northern Alberta, end view, c 1970  
LZ\_33: Farmer's sawmill northern Alberta, side view, c 1970  
LZ\_36: Fort Edmonton Park, ex-Northern Alberta Railways 107 (4-4-2 ?), 1987  
LZ\_35: Fort Edmonton Historical Park, 1920s Street, 1979  
LZ\_17: Mercoal buildings, likely 9/70  
LZ\_15: Mercoal house and new caravan, likely 7/90  
LZ\_16: Mercoal house, likely 7/90  
LZ\_14: Mercoal house, likely 9/70  
LZ\_13: Mercoal station, likely 9/70 (image reversed)  
LZ\_28: Mountain Park Branch, End-of-rail, 31.7 miles from Coalspur, 1968  
LZ\_30: Mountain Park Branch right-of-way, cut along river and bridge; railroad is abandoned but rail not yet lifted.  
LZ\_29: Mountain Park Branch track looking south towards Mountain Park; railroad is abandoned but rail not yet lifted.  
LZ\_26: Robb tunnel, closeup north (?) end, 1968  
LZ\_24: Robb tunnel, interior, built 1912, 1968  
LZ\_27: Robb tunnel, long shot south (?) end showing signs and telltale, 1968  
LZ\_25: Robb tunnel, medium shot south (?) end showing signs and telltale, 1968  
LZ\_64: Thorsby Feed Mill along one of the branch lines south-west of Edmonton, 3/4 view left from north, 7/71  
LZ\_65: Thorsby Feed Mill along one of the branch lines south-west of Edmonton, vertical view with tower from rear (south), 7/71  
LZ\_66: Thorsby Feed Mill along one of the branch lines south-west of Edmonton, interior through loading bay, 7/71  
LZ\_67: Thorsby Feed Mill along one of the branch lines south-west of Edmonton, interior loading bay, 7/71  
LZ\_68: Thorsby Feed Mill along one of the branch lines south-west of Edmonton, 3/4 view right from back (south), 7/71  
LZ\_69: Thorsby Feed Mill along one of the branch lines south-west of Edmonton, full end view from east, 7/71  
LZ\_70: Thorsby Feed Mill along one of the branch lines south-west of Edmonton, full front (north) view from road, 7/71  
LZ\_71: Thorsby Feed Mill along one of the branch lines south-west of Edmonton, 3/4 view right from north, 7/71  
LZ\_80: Wabamum strip mine, electric drag shovel, 7/66

**Captions/Proof Sheets for 97 Alberta Coal Branch & related images  
to accompany Kodak PhotoCD and slides; A C Lynn Zelmer, photographer**

**Slides sorted numerically**

- LZ\_01: CN 208372, ex-reefer in work service, Robb 9/70
- LZ\_02: CN 68348, in work service, Robb 9/70
- LZ\_03: CN 67983, in work service, Robb 9/70
- LZ\_04: CN 69525, bunk car in work service, Robb 9/70
- LZ\_05: CN 51654, ex-single dome tank car in work service, Robb 9/70
- LZ\_06: CN cars in work train, Robb 9/70
- LZ\_07: CN 69750, in work service, Robb 9/70
- LZ\_08: CN 4 outside-braced box cars in work train, Robb 9/70
- LZ\_09: CN 67479, in work service, Robb 9/70
- LZ\_10: CN 69967, in work service, Robb 9/70
- LZ\_11: CN 70139, ex-caboose in work service, Robb 9/70
- LZ\_12: Coal Branch Motors, Mercoal, likely 9/70
- LZ\_13: Mercoal station, likely 9/70 (image reversed)
- LZ\_14: Mercoal house, likely 9/70
- LZ\_15: Mercoal house and new caravan, likely 7/90
- LZ\_16: Mercoal house, likely 7/90
- LZ\_17: Mercoal buildings, likely 9/70
- LZ\_18: Erith Tie sawmill buildings right of burner, likely 9/70 (also see video)
- LZ\_19: Erith Tie sawmill buildings left of burner, likely 9/70 (also see video)
- LZ\_20: Erith Tie piled ties and lumber, likely 9/70 (also see video)
- LZ\_21: Erith tie sawdust burner, likely 9/70 (also see video)
- LZ\_22: Abandoned mine near Edson, long shot 8/66
- LZ\_23: Abandoned mine near Edson, medium shot 8/66
- LZ\_24: Robb tunnel, interior, built 1912, 1968
- LZ\_25: Robb tunnel, medium shot south (?) end showing signs and telltale, 1968
- LZ\_26: Robb tunnel, closeup north (?) end, 1968
- LZ\_27: Robb tunnel, long shot south (?) end showing signs and telltale, 1968
- LZ\_28: Mountain Park Branch, End-of-rail, 31.7 miles from Coalspur, 1968
- LZ\_29: Mountain Park Branch track looking south towards Mountain Park; railroad is abandoned but rail not yet lifted.
- LZ\_30: Mountain Park Branch right-of-way, cut along river and bridge; railroad is abandoned but rail not yet lifted.
- LZ\_31: Coal Branch wooden trestle (near Robb?), 1968
- LZ\_32: Coal Branch wooden trestle deck (near Robb?), 1968
- LZ\_33: Farmer's sawmill northern Alberta, side view, c 1970
- LZ\_34: Farmer's sawmill northern Alberta, end view, c 1970
- LZ\_35: Fort Edmonton Historical Park, 1920s Street, 1979
- LZ\_36: Fort Edmonton Park, ex-Northern Alberta Railways 107 (4-4-2 ?), 1987
- LZ\_37: CN trestle: Steel replacement trestle on CN mainline west of Edmonton, 1968 (2 of 2)
- LZ\_38: CN trestle: Steel replacement trestle on CN mainline west of Edmonton, 1968 (1 of 2)

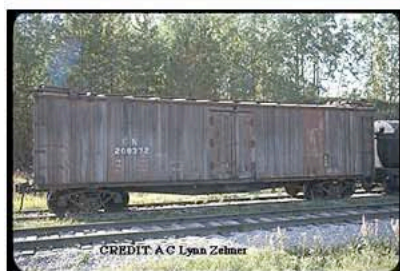
**Captions/Proof Sheets for 97 Alberta Coal Branch & related images  
to accompany Kodak PhotoCD and slides; A C Lynn Zelmer, photographer**

- LZ\_39: CN trestle: Converting wooden trestle to steel and concrete on CN mainline west of Edmonton, before 1968 (image reversed) (1 of 3)
- LZ\_40: CN trestle: Converting wooden trestle to steel and concrete on CN mainline west of Edmonton, before 1968 (2 of 3)
- LZ\_41: CN trestle: Converting wooden trestle to steel and concrete on CN mainline west of Edmonton, before 1968 (3 of 3)
- LZ\_42: Coal Valley, old adit (overgrown), 1970
- LZ\_43: Coal Valley, old adit (vertical), 1970
- LZ\_44: Coal Valley, remains of old house, 1970
- LZ\_45: Coal Valley, erosion at base of slag/overburden, 1970
- LZ\_46: Coal Valley, looking west across the grade and subsistence, 1970
- LZ\_47: Coal Valley, looking west across the grade to the road, 1970 (partial image copied)
- LZ\_48: Coal Valley, looking south across abandoned open pit mines and overburden piles, 1970
- LZ\_49: Coal Valley, new telephone line, likely looking north, 1970
- LZ\_50: Coalspur roundhouse foundations looking towards Coalspur station, 1968
- LZ\_51: Coalspur roundhouse foundations and pit, 1968
- LZ\_52: Coalspur miner's shack, 1966
- LZ\_53: Coalspur mine, wooden mining wagon on mine tracks, 1966
- LZ\_54: Coalspur mine, hand operated points on mine tracks, 1966
- LZ\_55: Coalspur mine, link and pin coupling on wooden mining wagons, 1966
- LZ\_56: Coalspur mine buildings/tipple, looking south, 1968
- LZ\_57: Coal Valley, garbage and overburden piles, 1970
- LZ\_58: Coal Valley, looking towards open pit mine, now water-filled, 1970
- LZ\_59: Coal Valley, likely looking south, along grade towards open pit mine, now water-filled, 1970
- LZ\_60: Coal Valley, looking south (?) across remains of yard and loading area, 1970
- LZ\_61: Coal Valley, looking north along grade; new telephone lines runs on poles at edge of trees to left of grade, road beyond, 1970
- LZ\_62: Coal Valley, looking north from the road/telephone line side of old yard, 1970
- LZ\_63: Coal Valley, erosion and gully at edge of overburden pile, 1970
- LZ\_64: Thorsby Feed Mill along one of the branch lines south-west of Edmonton, 3/4 view left from north, 7/71
- LZ\_65: Thorsby Feed Mill along one of the branch lines south-west of Edmonton, vertical view with tower from rear (south), 7/71
- LZ\_66: Thorsby Feed Mill along one of the branch lines south-west of Edmonton, interior through loading bay, 7/71
- LZ\_67: Thorsby Feed Mill along one of the branch lines south-west of Edmonton, interior loading bay, 7/71
- LZ\_68: Thorsby Feed Mill along one of the branch lines south-west of Edmonton, 3/4 view right from back (south), 7/71
- LZ\_69: Thorsby Feed Mill along one of the branch lines south-west of Edmonton, full end view from east, 7/71
- LZ\_70: Thorsby Feed Mill along one of the branch lines south-west of Edmonton, full front (north) view from road, 7/71

**Captions/Proof Sheets for 97 Alberta Coal Branch & related images  
to accompany Kodak PhotoCD and slides; A C Lynn Zelmer, photographer**

- LZ\_71: Thorsby Feed Mill along one of the branch lines south-west of Edmonton, 3/4 view right from north, 7/71
- LZ\_72: CN trackside shed built from ties, Drumheller 1973
- LZ\_73: CN Freight shed Drumheller, trackside view with loading doors, 1973
- LZ\_74: CN Freight shed Drumheller, end and partial front view, 1973
- LZ\_75: CN Freight shed Drumheller, close-up end view, 1973
- LZ\_76: CN Grain elevators Drumheller, at end of yard, looking east from station, 1973
- LZ\_77: CN standard station, Camrose AB, 1973
- LZ\_78: CN Camrose AB, small works buildings, 1973
- LZ\_79: CN Main line 4-8-2 locomotive 6060 on display at Jasper, 5/64
- LZ\_80: Wabamum strip mine, electric drag shovel, 7/66
- LZ\_81: CN work gang in the Yellowhead Pass area, replacing a length of rail, 1970
- LZ\_82: CN work gang in the Yellowhead Pass area, crane with counterbalance weight, 1970
- LZ\_83: CN work gang in the Yellowhead Pass area, spiking track, 1970
- LZ\_84: CN work gang in the Yellowhead Pass area, tie crane, 1970
- LZ\_85: Coalspur, semi-abandoned garage, 1966
- LZ\_86: Coalspur General Store, now residence, 1966
- LZ\_87: Coalspur, abandoned store, 1966
- LZ\_88: Coalspur, abandoned commercial building, 1966
- LZ\_89: Coalspur, looking north across the wye towards the Coalspur mine, 1968
- LZ\_90: CN switch stand, looking north down the Coalspur yard, 1968
- LZ\_91: Coalspur weir looking across river to town, 1968
- LZ\_92: Coalspur, looking north down yard towards station, 1968
- LZ\_93: Coalspur station, CN Train Order board, 1968
- LZ\_94: Coalspur station from west side, 1968
- LZ\_95: Coalspur station from south side, 1966
- LZ\_96: Coalspur station from east side, 1968
- LZ\_97: Coalspur mine, small building and stack of coal wagons, 1968

Captions/Proof Sheets for 97 *Alberta Coal Branch* & related images  
to accompany Kodak PhotoCD and slides; A C Lynn Zelmer, photographer



LZ\_01.JPG



LZ\_02.JPG



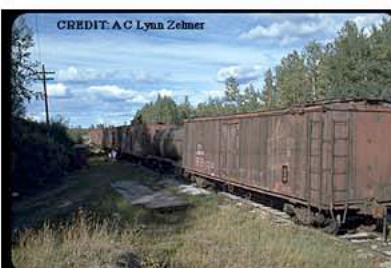
LZ\_03.JPG



LZ\_04.JPG



LZ\_05.JPG



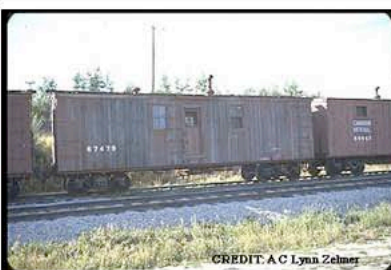
LZ\_06.JPG



LZ\_07.JPG



LZ\_08.JPG



LZ\_09.JPG



LZ\_10.JPG



LZ\_11.JPG



LZ\_12.JPG

Captions/Proof Sheets for 97 *Alberta Coal Branch* & related images  
to accompany Kodak PhotoCD and slides; A C Lynn Zelmer, photographer



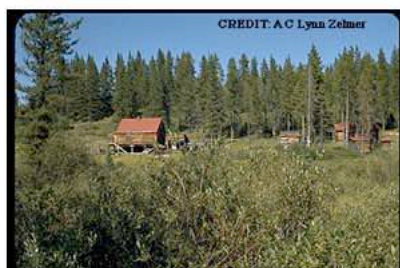
LZ\_13.JPG



LZ\_14.JPG



LZ\_15.JPG



LZ\_16.JPG



LZ\_17.JPG



LZ\_18.JPG



LZ\_19.JPG



LZ\_20.JPG



LZ\_21.JPG



LZ\_22.JPG



LZ\_23.JPG



LZ\_24.JPG



Captions/Proof Sheets for 97 *Alberta Coal Branch* & related images  
to accompany Kodak PhotoCD and slides; A C Lynn Zelman, photographer



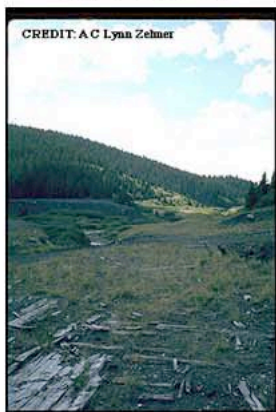
LZ\_25.JPG



LZ\_26.JPG



LZ\_27.JPG



LZ\_28.JPG



LZ\_29.JPG



LZ\_30.JPG



LZ\_31.JPG



LZ\_32.JPG



LZ\_33.JPG



LZ\_34.JPG

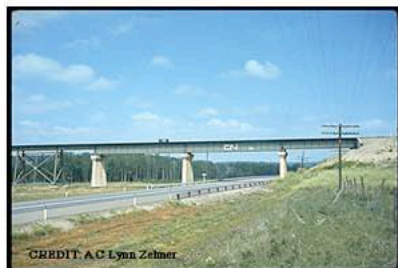


LZ\_35.JPG



LZ\_36.JPG

Captions/Proof Sheets for 97 *Alberta Coal Branch* & related images  
to accompany Kodak PhotoCD and slides; A C Lynn Zelman, photographer



LZ\_37.JPG



LZ\_38.JPG



LZ\_39.JPG



LZ\_40.JPG



LZ\_41.JPG



LZ\_42.JPG



LZ\_43.JPG



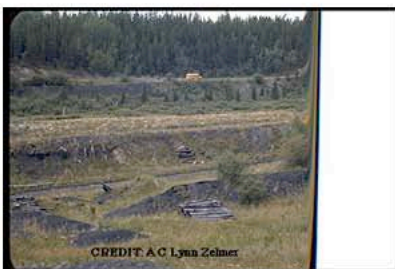
LZ\_44.JPG



LZ\_45.JPG



LZ\_46.JPG



LZ\_47.JPG



LZ\_48.JPG

Captions/Proof Sheets for 97 *Alberta Coal Branch* & related images  
to accompany Kodak PhotoCD and slides; A C Lynn Zelmer, photographer



LZ\_49.JPG



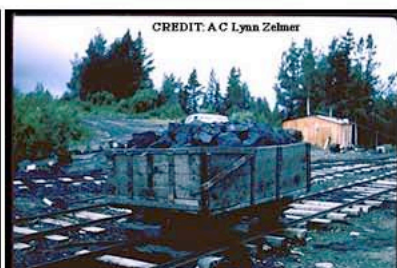
LZ\_50.JPG



LZ\_51.JPG



LZ\_52.JPG



LZ\_53.JPG



LZ\_54.JPG



LZ\_55.JPG



LZ\_56.JPG



LZ\_57.JPG



LZ\_58.JPG



LZ\_59.JPG



LZ\_60.JPG

Captions/Proof Sheets for 97 *Alberta Coal Branch* & related images  
to accompany Kodak PhotoCD and slides; A C Lynn Zelman, photographer



LZ\_61.JPG



LZ\_62.JPG



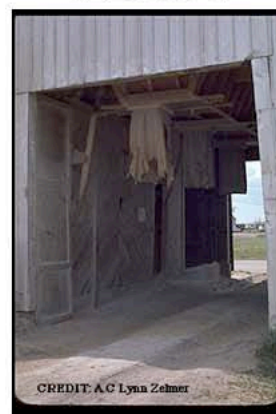
LZ\_63.JPG



LZ\_64.JPG



LZ\_65.JPG



LZ\_66.JPG



LZ\_67.JPG



LZ\_68.JPG



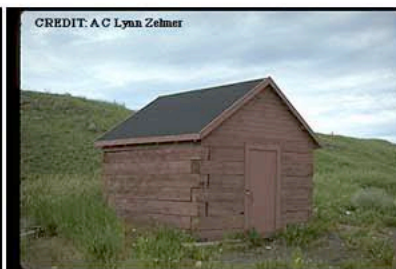
LZ\_69.JPG



LZ\_70.JPG



LZ\_71.JPG



LZ\_72.JPG

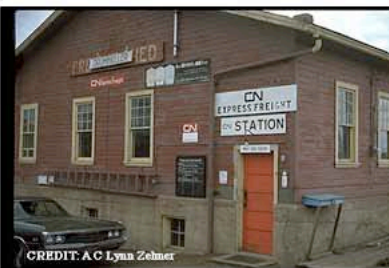
Captions/Proof Sheets for 97 *Alberta Coal Branch* & related images  
to accompany Kodak PhotoCD and slides; A C Lynn Zelmer, photographer



LZ\_73.JPG



LZ\_74.JPG



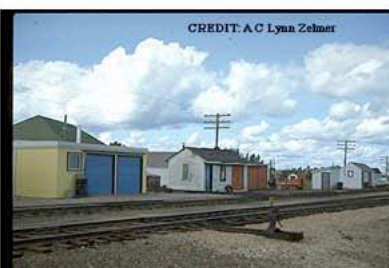
LZ\_75.JPG



LZ\_76.JPG



LZ\_77.JPG



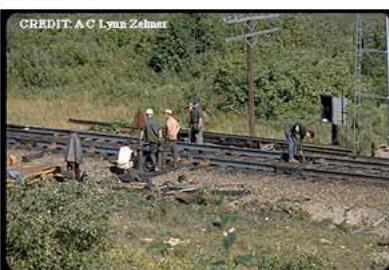
LZ\_78.JPG



LZ\_79.JPG



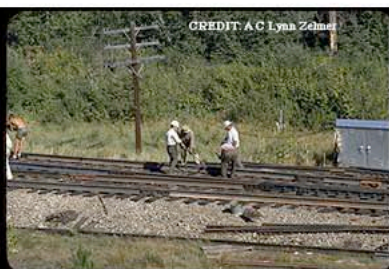
LZ\_80.JPG



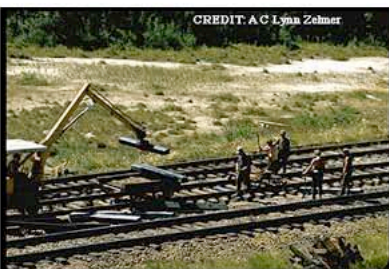
LZ\_81.JPG



LZ\_82.JPG

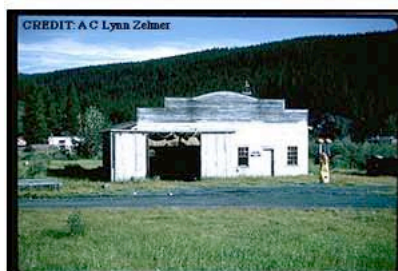


LZ\_83.JPG

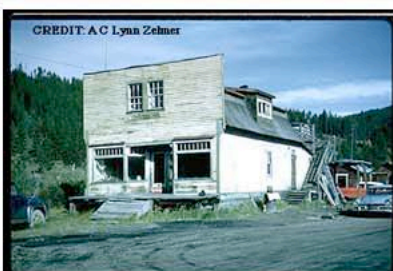


LZ\_84.JPG

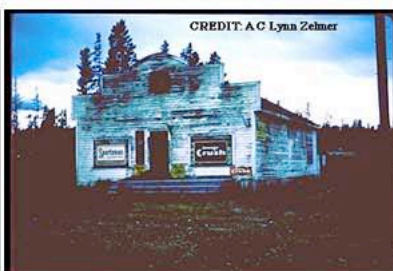
Captions/Proof Sheets for 97 *Alberta Coal Branch* & related images  
to accompany Kodak PhotoCD and slides; A C Lynn Zelmer, photographer



LZ\_85.JPG



LZ\_86.JPG



LZ\_87.JPG



LZ\_88.JPG



LZ\_89.JPG



LZ\_90.JPG



LZ\_91.JPG



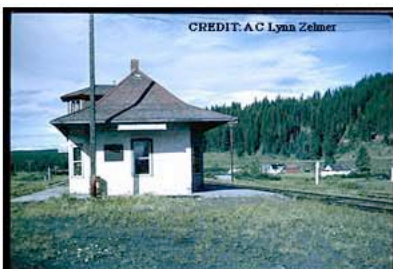
LZ\_92.JPG



LZ\_93.JPG



LZ\_94.JPG



LZ\_95.JPG



LZ\_96.JPG

**Captions/Proof Sheets for 97 *Alberta Coal Branch* & related images  
to accompany Kodak PhotoCD and slides; A C Lynn Zelmer, photographer**



LZ\_97.JPG