

## Modelling the Railways of Queensland Convention 2012

The following slides are most of the visuals from John Browning's clinic presentation at the 2012 Modelling the Railways of Queensland Convention in Brisbane. John's notes are also available from the MRQC web site ([OldRailHeritage.com/mrqc/](http://OldRailHeritage.com/mrqc/)).

John Browning and Brian Webber are the authors of 'Built by Bundaberg Foundry', published in 2012 by ANGRMS (Australian Narrow Gauge Railway Museum Society, [www.angrms.org.au/](http://www.angrms.org.au/)).

# BUNDABERG FOUNDRY LOCOMOTIVES



John Browning

All photos by John Browning unless otherwise indicated

# BUNDABERG FOWLER

## 1952-1953



Photo: Bob Gough

cane haulage  
John Fowler & Sons (Leeds) Ltd

# BUNDABERG JENBACH

## 1954-1956



sugar industry & underground coal haulage  
Jenbacher Werke, Austria

# BUNDABERG HUNSLET

1991



cane haulage  
Hunslet Engine Co Ltd

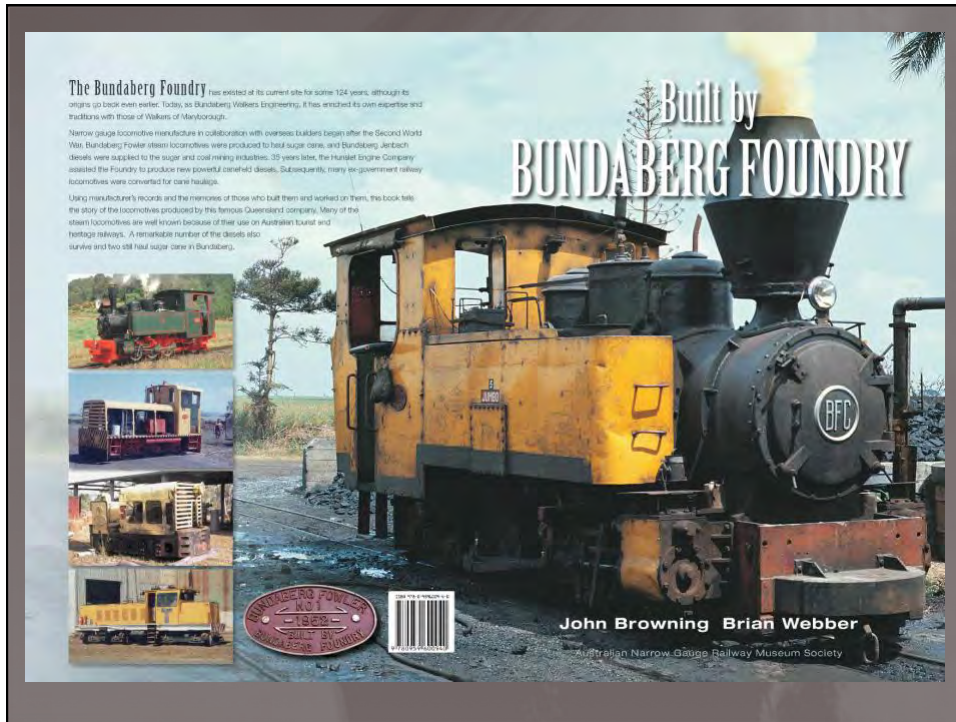
# WALKERS DIESEL-HYDRAULIC REBUILDS

1992-2004



main line conversions  
QR, NSWGR, WAGR







John Browning collection



Bundaberg Fowler 1  
– Mulgrave Mill

photo courtesy John Hampson

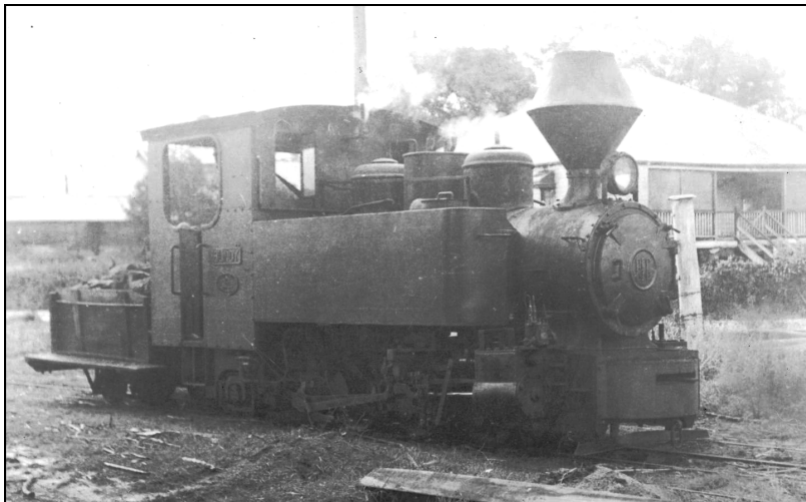


Photo: Ken Rogers



Bundaberg Fowler 2  
Mossman Mill

Photo: R.K.Warren

Photo: Brian Webber





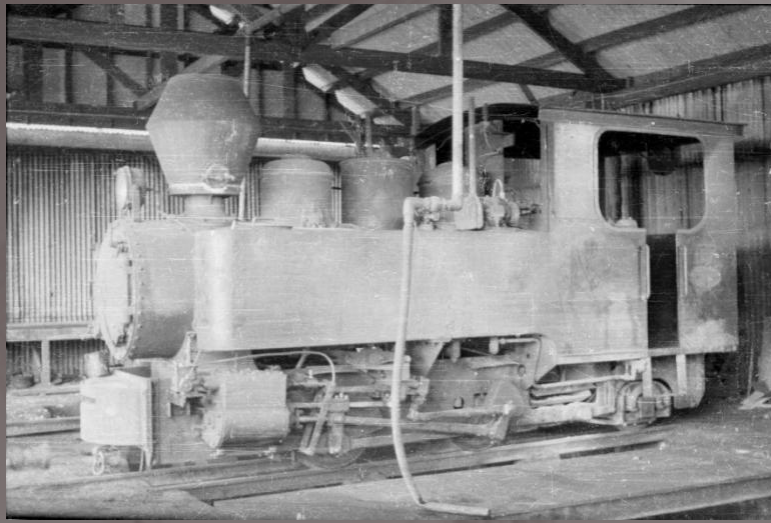


Photo: Keith McDonald



Photo: John Elsol

### Bundaberg Fowler 3 – Mourilyan Mill

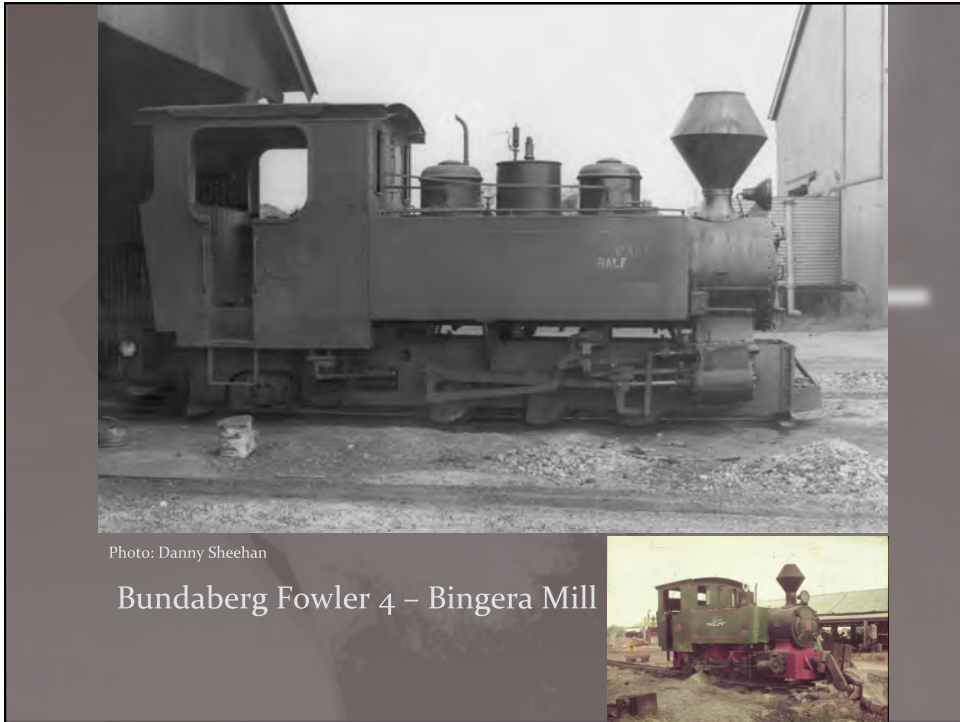


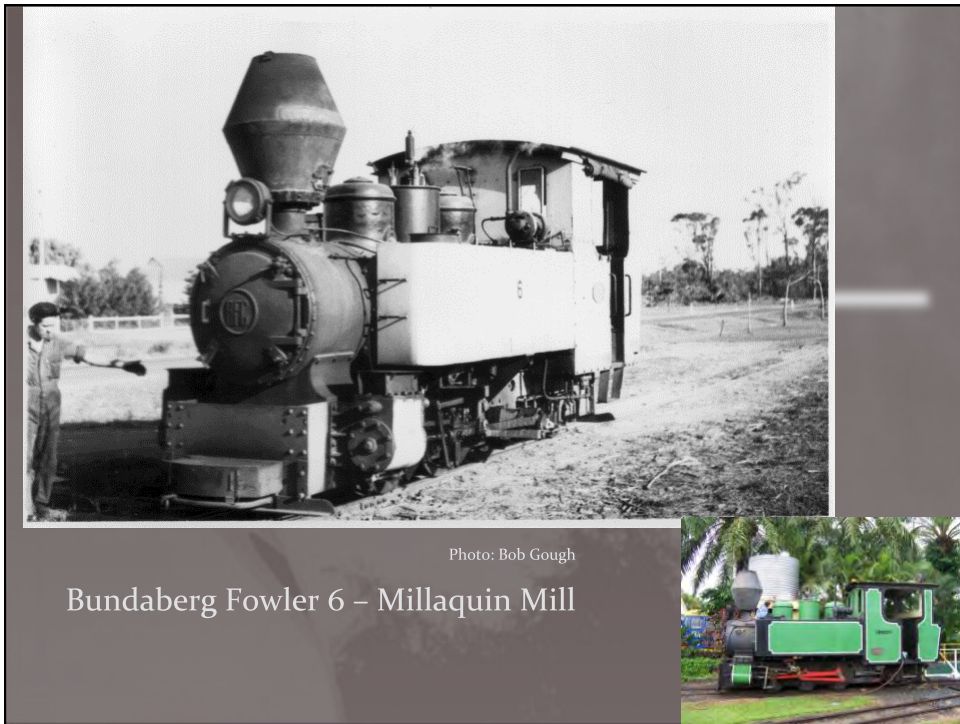
Photo: Bob Wilson

### Bundaberg Fowler 3 modifications

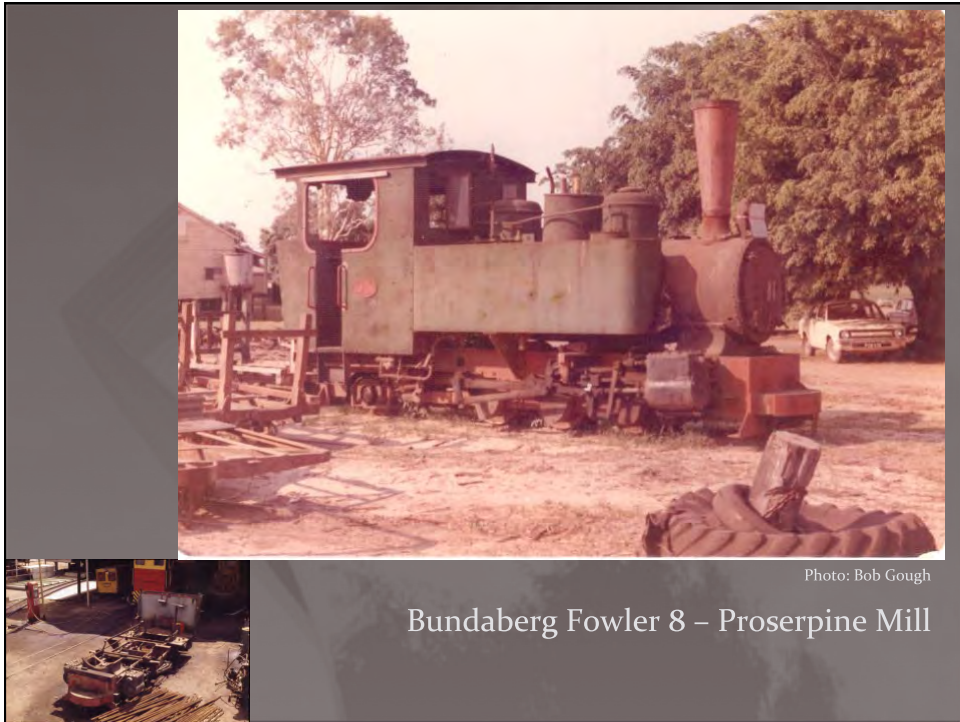


Photo: Brian Webber











John Browning collection

Bundaberg Jenbach 11



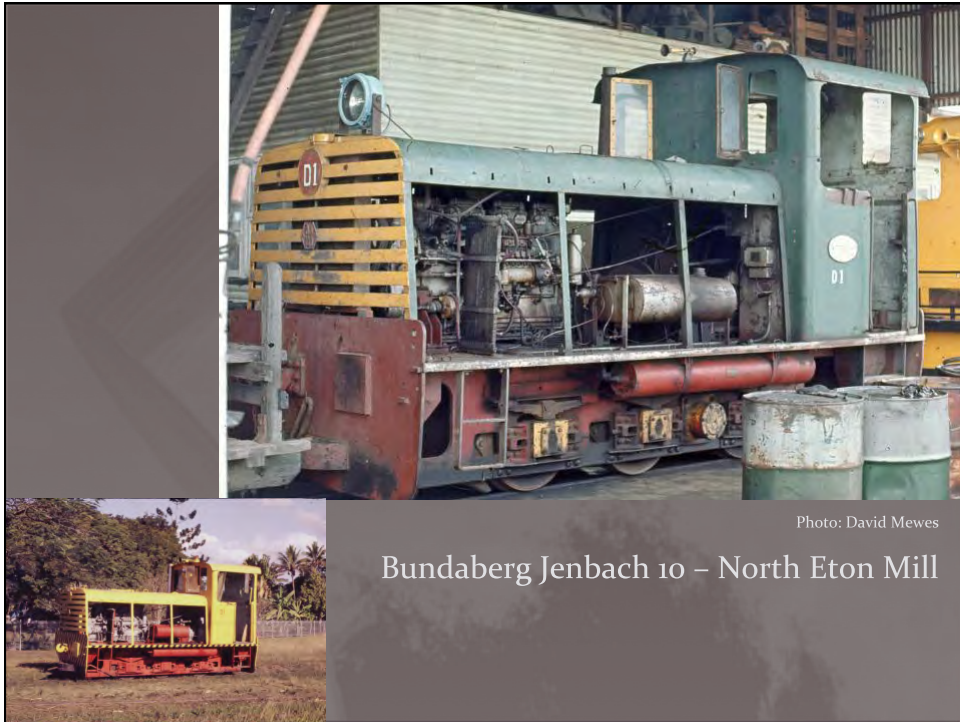
Photo: Keith McDonald



John Browning collection

Bundaberg Jenbach 10 trials









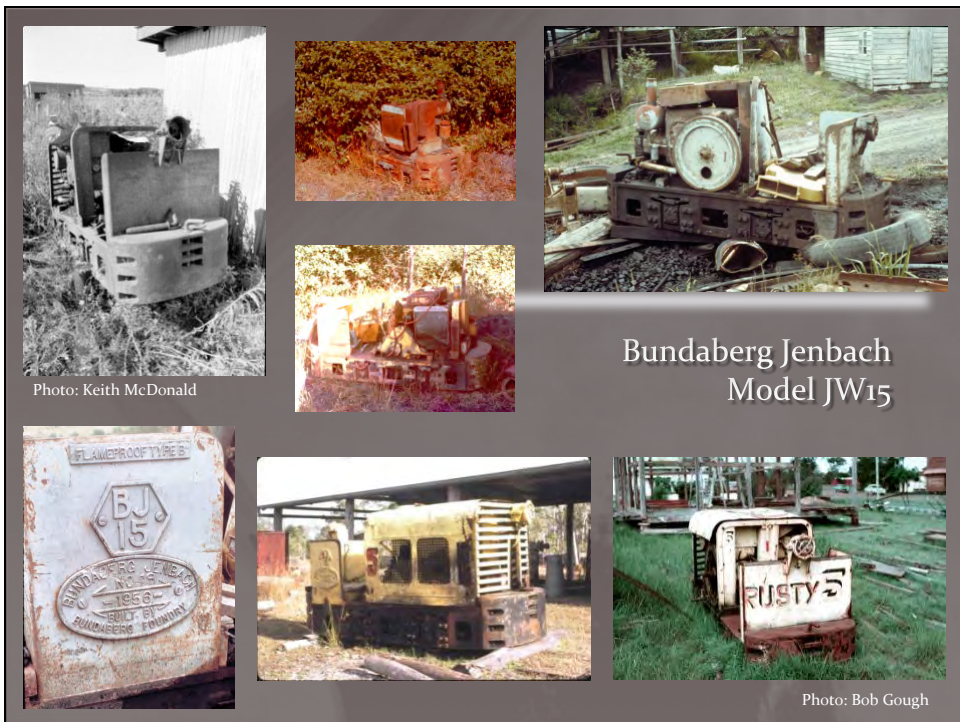
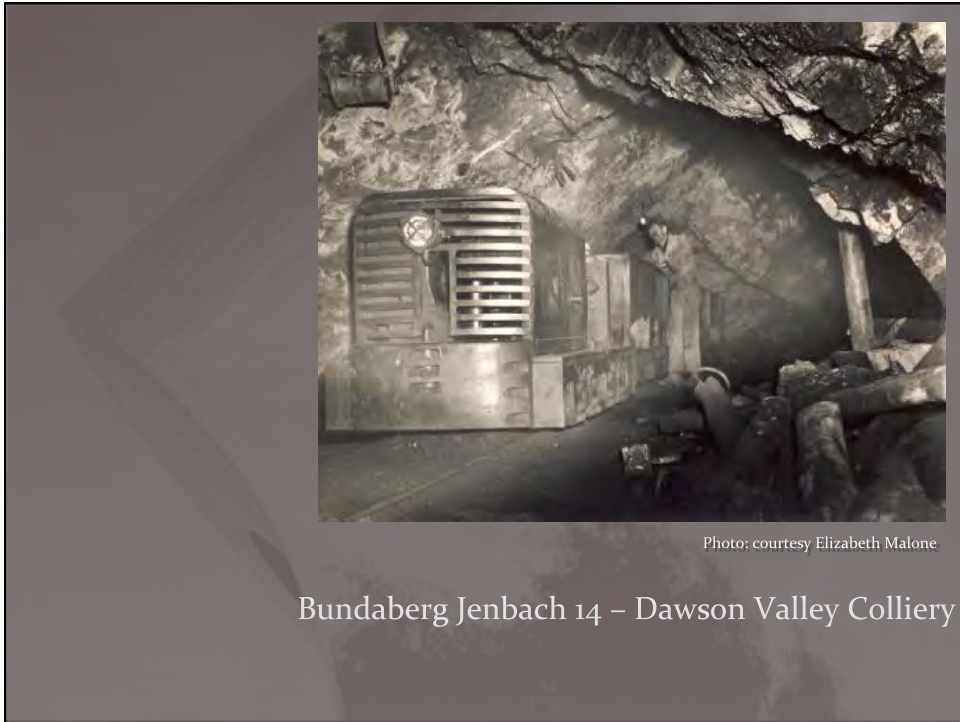






Photo: Kath Greenhalgh

Bundaberg Jenbach 16  
Model JW20 -  
Acland Colliery







Bundaberg  
Foundry  
Engineers  
001





Photo: Greg Stephenson

Bundaberg  
Foundry  
Engineers  
002



DH class conversion



Photo: Bob Gough



73 class conversion



M class conversion

