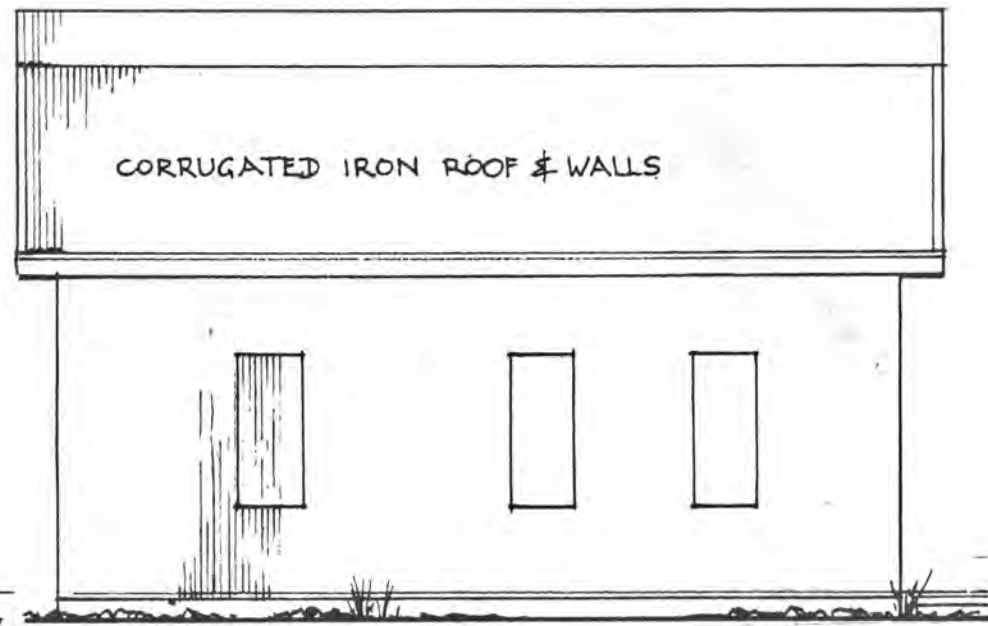


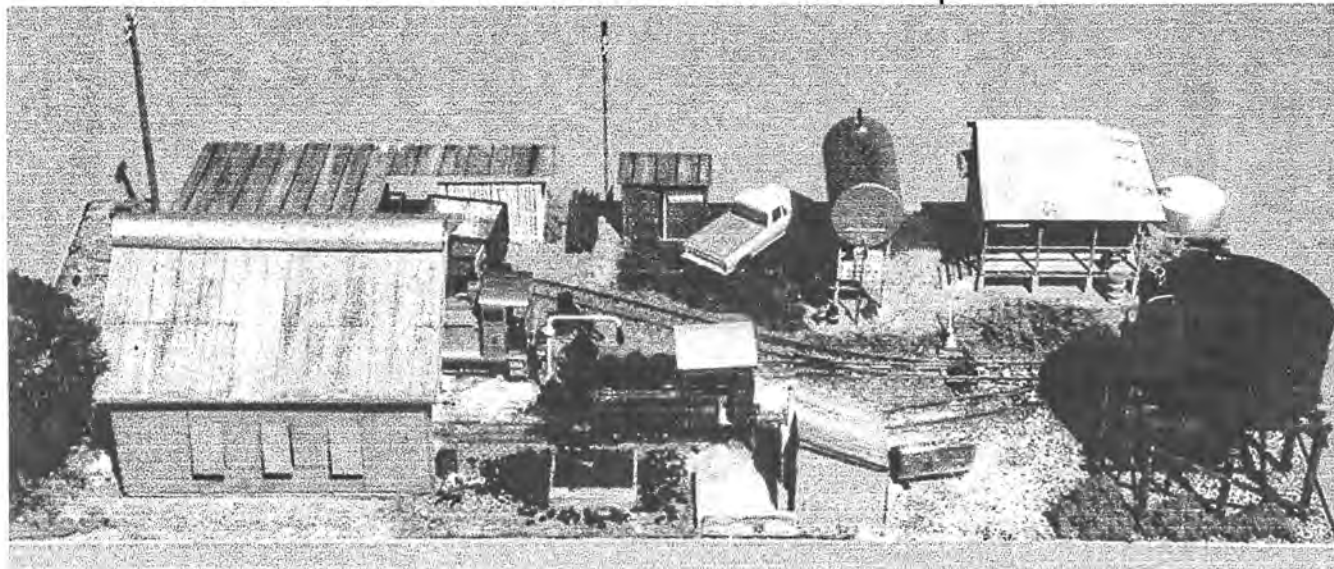
FRONT ELEVATION

© Jim Hutchinson — Notes from 2000 Modelling the Railways of Queensland Convention: [www.zelmeroz.com/mrqc](http://www.zelmeroz.com/mrqc)



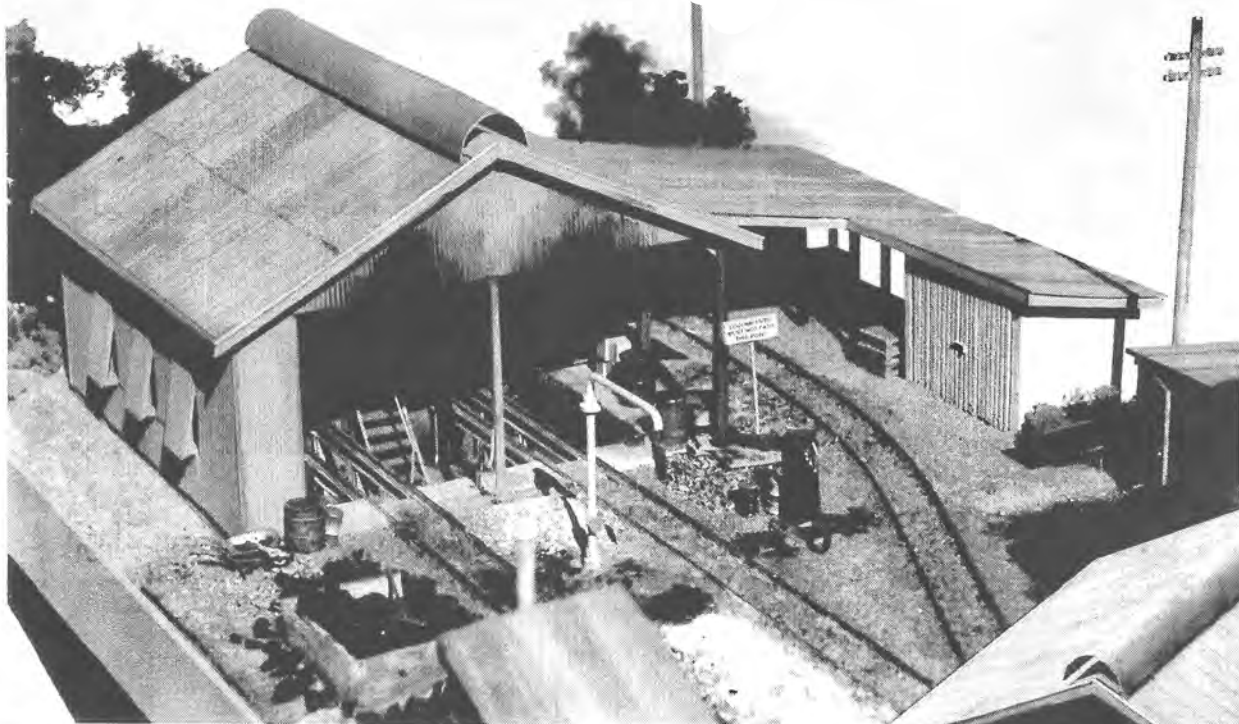
SIDE ELEVATION

DRAWING AND MODEL BASED ON  
**QUNABA LOCO SHED - 1980**  
 SCALE - HO 1:87

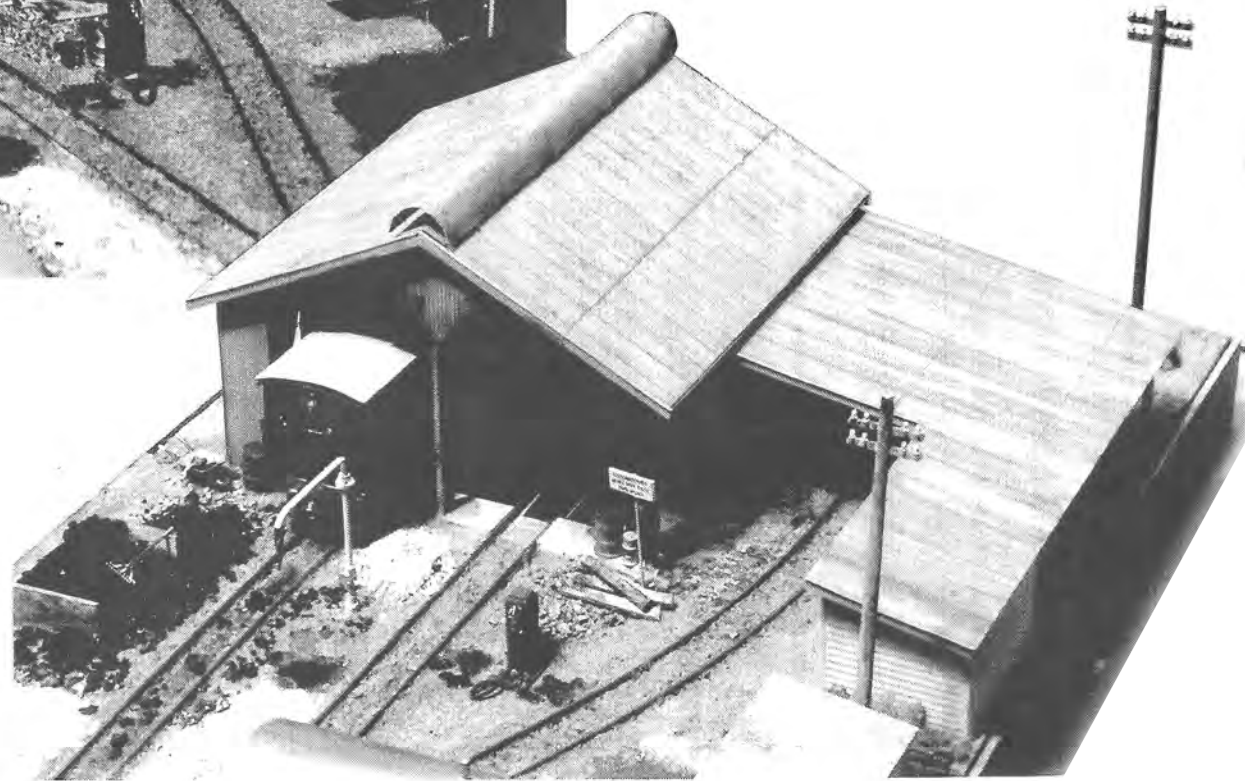


The structure could have been framed with steel members, and for the model 3/32" styrene H sections were used for the columns, together with styrene strips for the wall framing. 30 thou styrene sheet was used for the roof formers and under the roof sheeting. Corrugated aluminium was used for wall cladding and roof. Construction of the base was similar to that used for Mourilyan model.

This model forms part of the freelance loco depot diorama shown in the photograph to the left and on the next page.



The concurrent use of coaling and watering facilities along with a fuel bowser and associated tanks (without questioning the safety aspect of such a close relationship!) may thus be justified chronologically, at least in modelling terms. In addition, the basic shed structure has been extended with a skillion roof to incorporate a small bin repair road and miscellaneous storage facilities.



The Qunaba shed model was incorporated into the loco depot diorama depicted here. The resulting scene demonstrates the need to embellish the site with appropriate detail. Loco depots are working areas, and a pristine environment is far from appropriate. This freelance scene recalls the steam to diesel transition era, which makes it possible to include facilities for each.