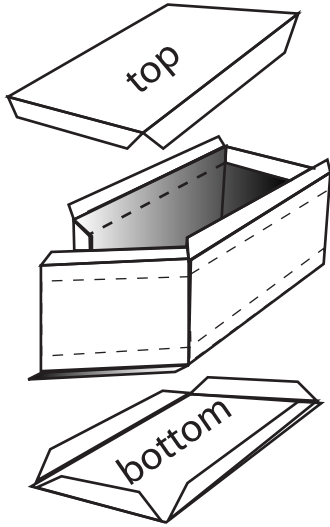


BIN assembly

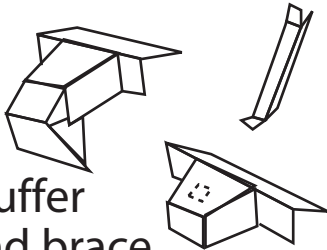
1 bin

fit top and bottom to dotted lines

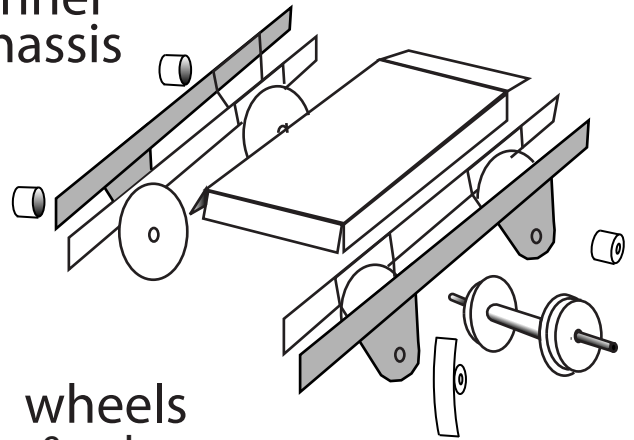


3

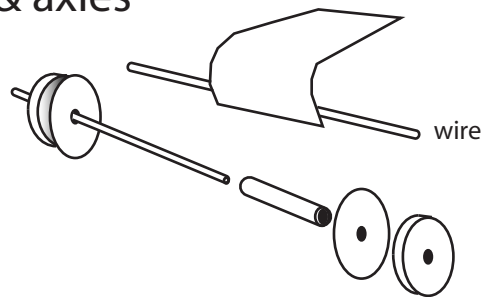
buffer and brace



2 inner chassis



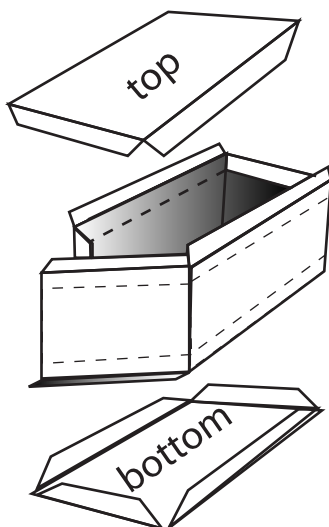
4 wheels & axles



BIN assembly

1 bin

fit top and bottom to dotted lines

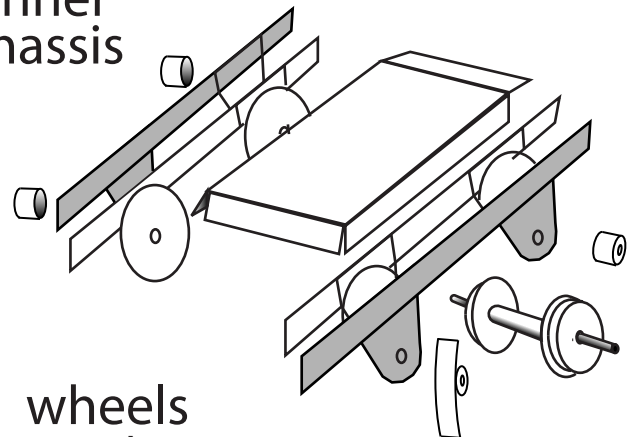


3

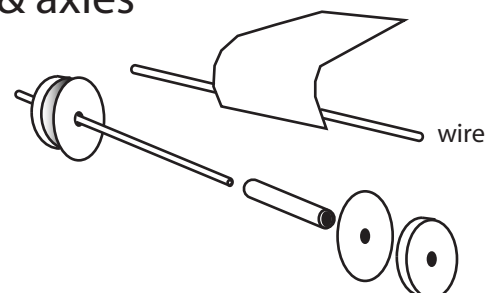
buffer and brace



2 inner chassis

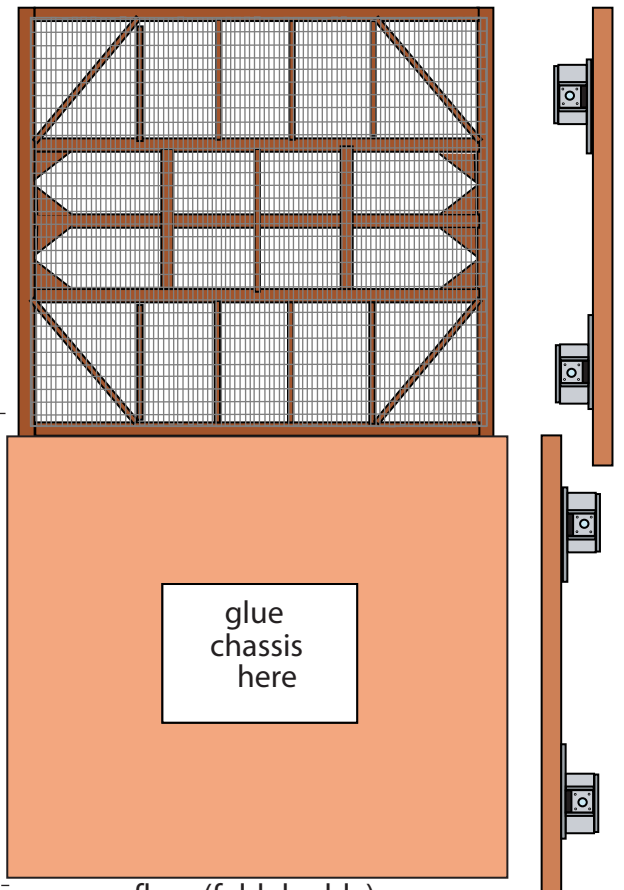
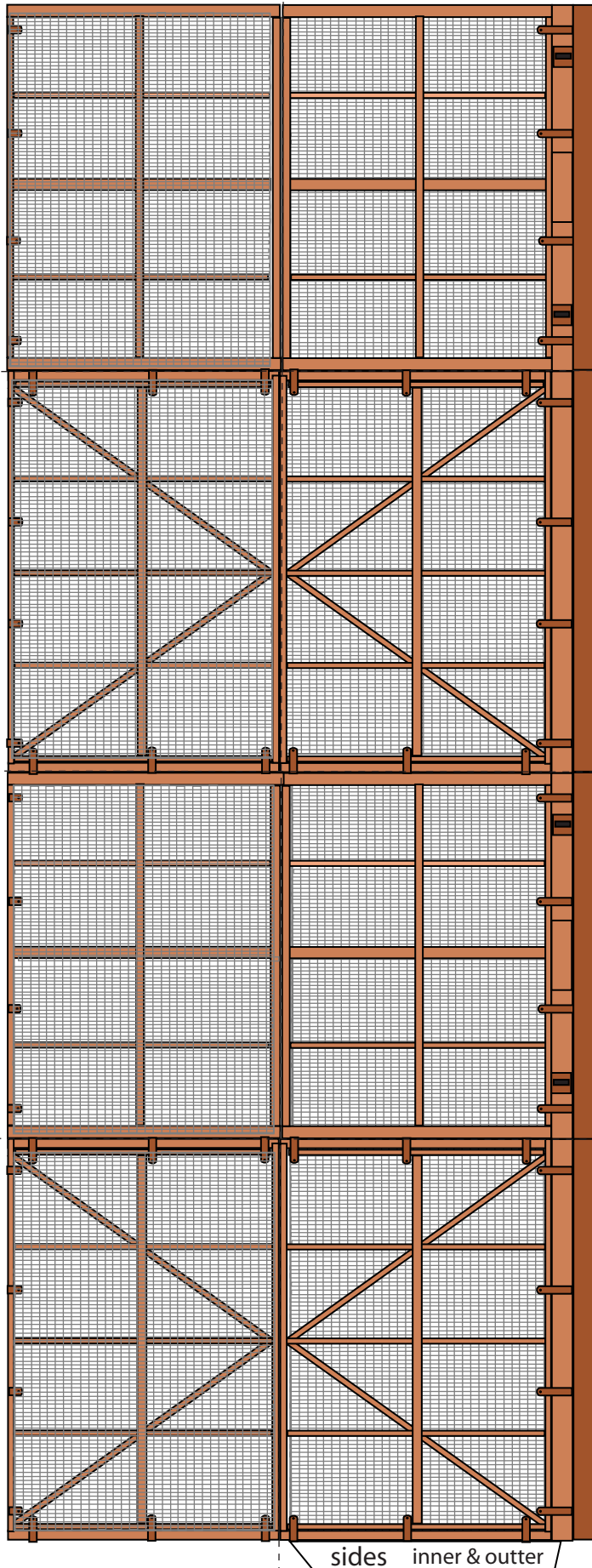


4 wheels & axles

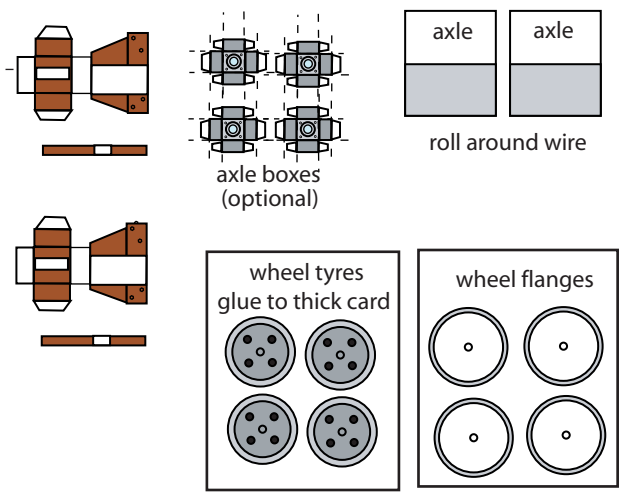
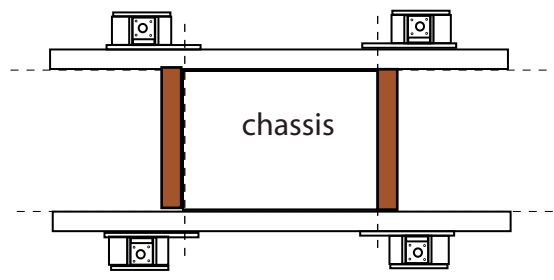


MORETON SUGAR MILL 4 Ton Chopped Cane Bin

NAMBOUR empty bin



floor (fold double)

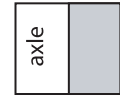
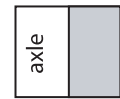
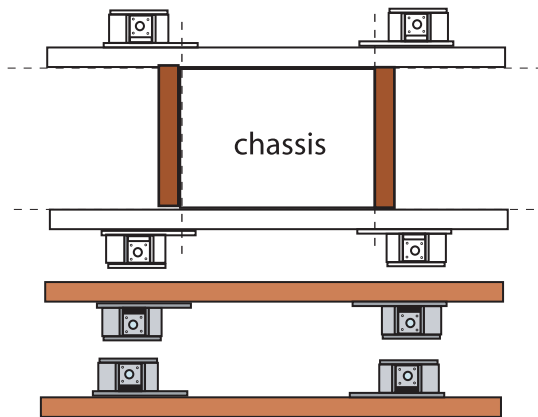
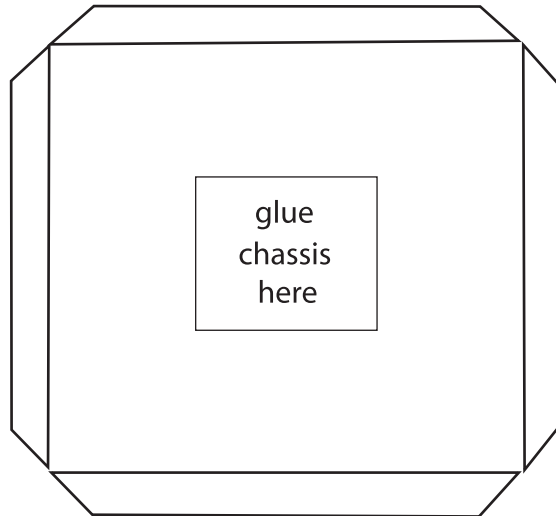
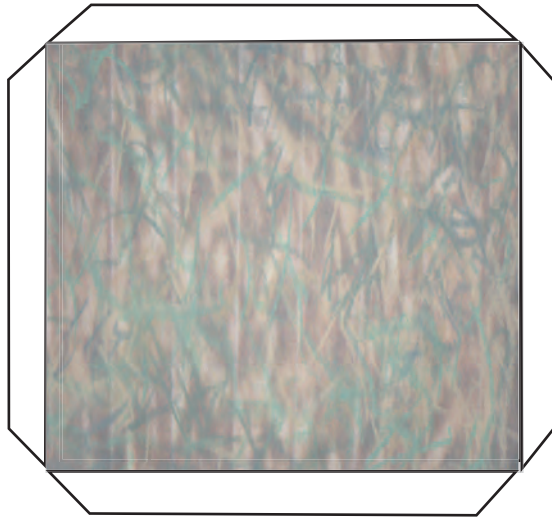
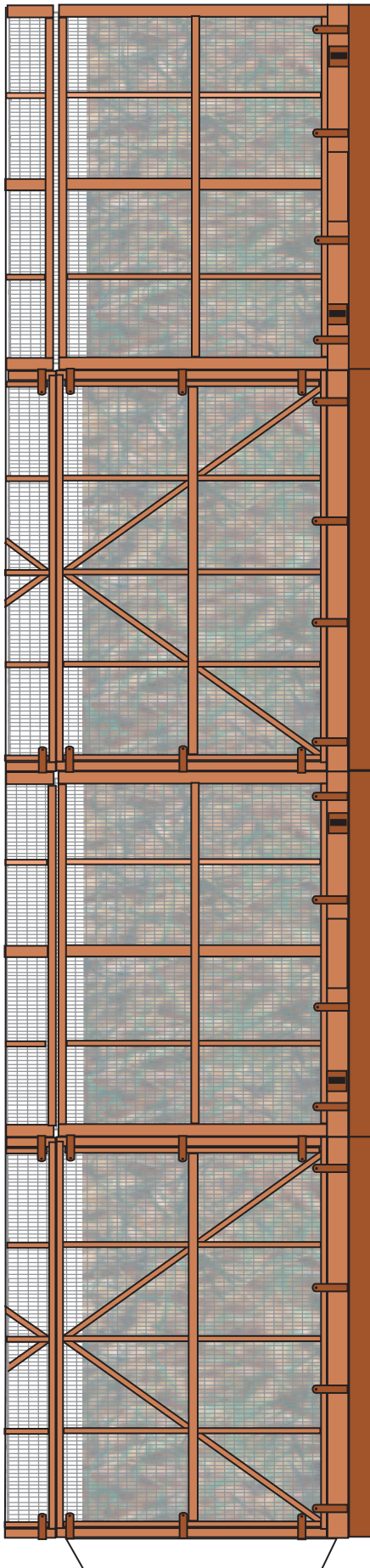


design by Jim & Keith Fainges
(Ladndad) 2002

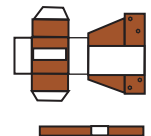
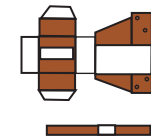
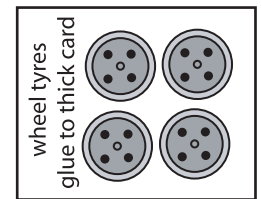
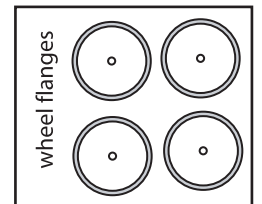
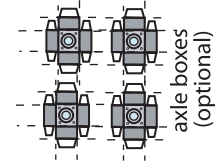


MORETON SUGAR MILL 4 Ton Chopped Cane Bin

NAMBOUR full bin



roll around wire



4 Ton CANE BIN

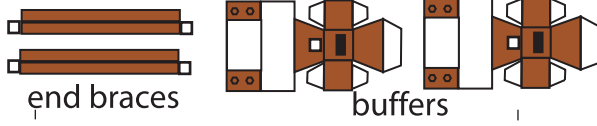
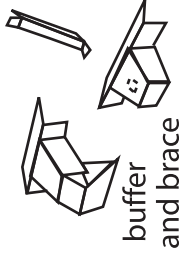
(Plane Creek Central Mill)

design by Jim Fainges

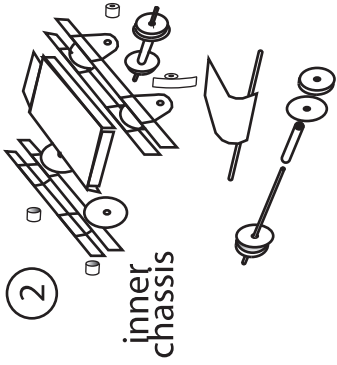


2002

3

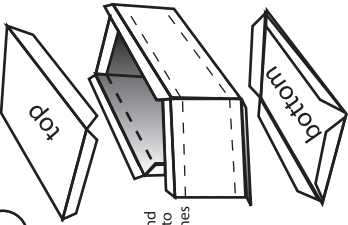


2



inner chassis

1



bin
fit top and bottom to dotted lines

