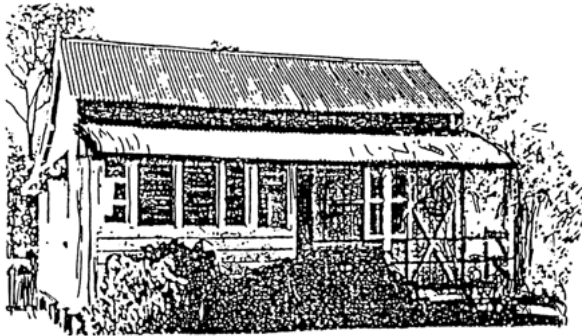




**A C Lynn Zelmer**  
Box 1414 Main PO  
Rockhampton QLD 4700  
Australia

## Queensland Cottage Card Kit

Developed by Lynn Zelmer from drawings by Jim Fainges



The Guldup cottage was built in Morayfield and later moved to become the Caboolture Schoolmaster's residence. It's about as basic as a Queensland style cottage gets while still having several rooms and an inside kitchen.

For the model the full width louvres on the sleep-out were replaced with a single window and shade. The faded green weatherboard with white trim is reasonably typical and looks realistic in card than white.

The kit contains textures derived from from Clever Models LLC

<http://clevermodels.squarespace.com/>  
and other components from Ron Aubrey.

The cottage kit is available on the CaneSIG web site for non-commercial use and will feature in two Narrow Gauge Down Under articles during 2011.

<http://www.narrowgagedownunder.com>



This model has been printed on a smooth surface 210 gsm white card with an inkjet printer. All components are card except for the figure and the downspout from the rear guttering (eavestrough), which is styrene. Walls are individual board construction, including the studs on the exposed verandah.

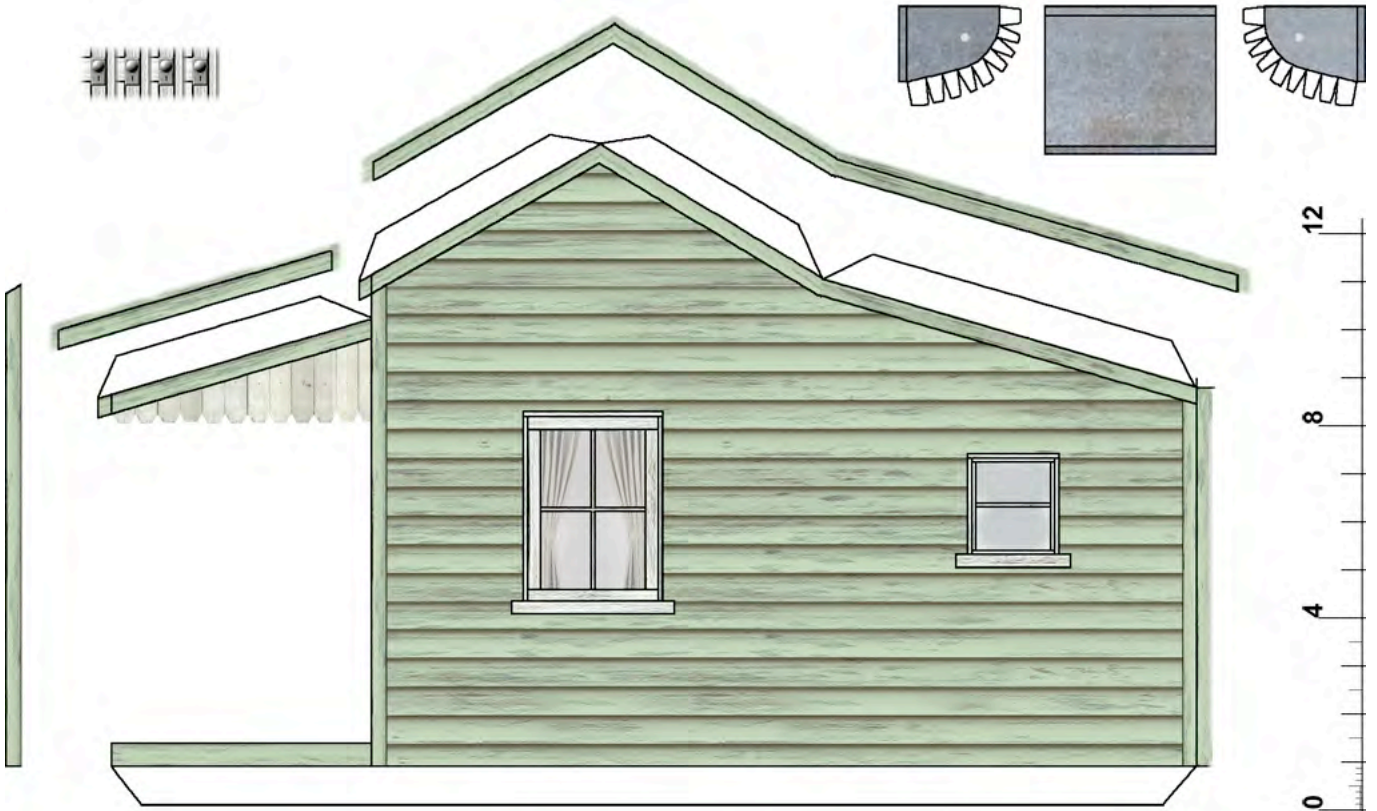
The stumps are temporary, as are the stairs, and will be replaced when the model is mounted on the On30 *Capricorn Sugar Rail Museum* layout.

Ideally there would be a full set of stumps for each row, but only the perimeter stumps have been included on this display mounting.

**CaneSIG** Support for modellers  
of sugar cane railways

<http://www.zelmeroz.com/canesig>





Queensland Cottage kit inspired by Jim Fainges' Guldup Cottage drawings on the CaneSIG web site. Free download for non-commercial modelling use © Lynn Zelmer 2010. See my NGDU articles for more on modelling Queensland's sugar cane and shire railways.

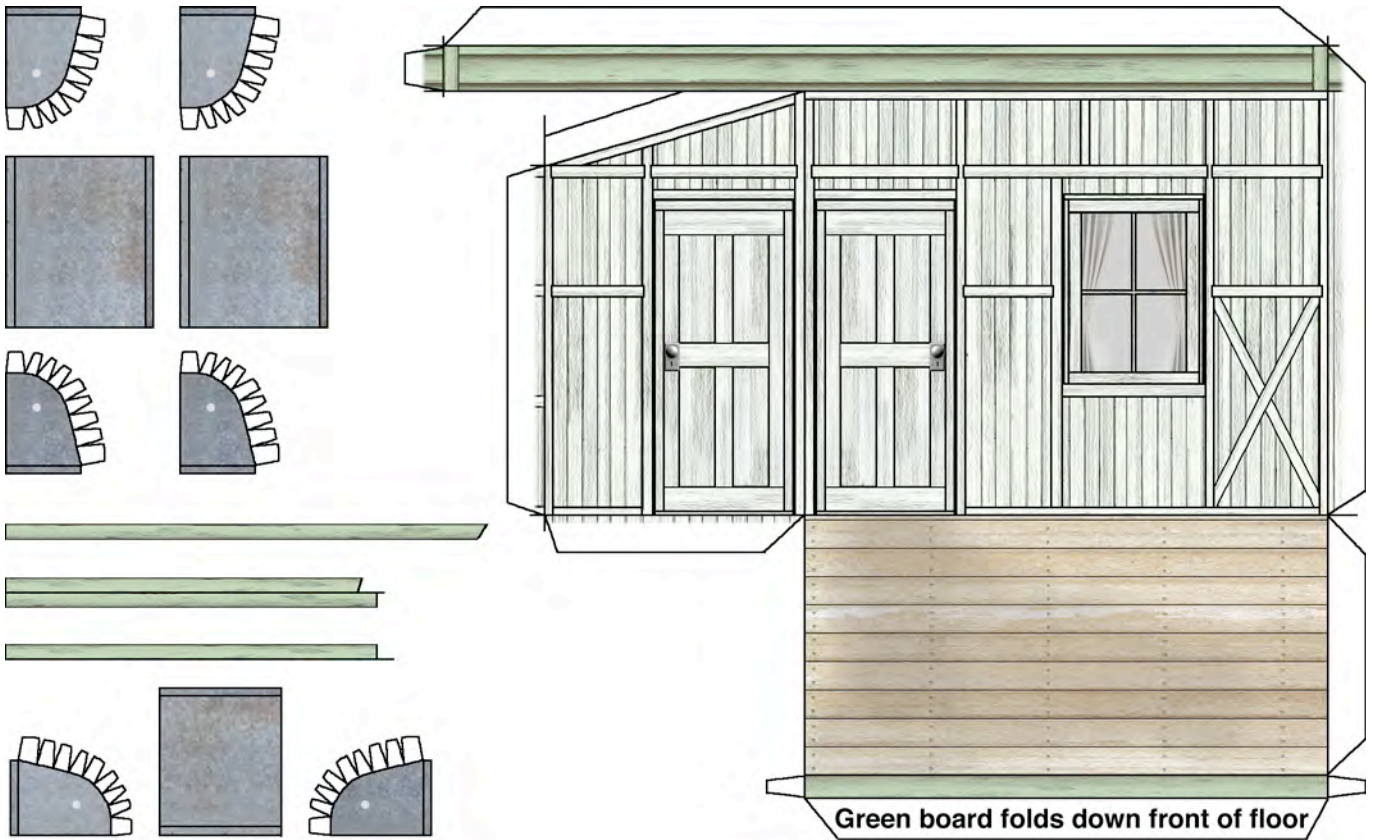


Queensland Cottage On30 (1:48)

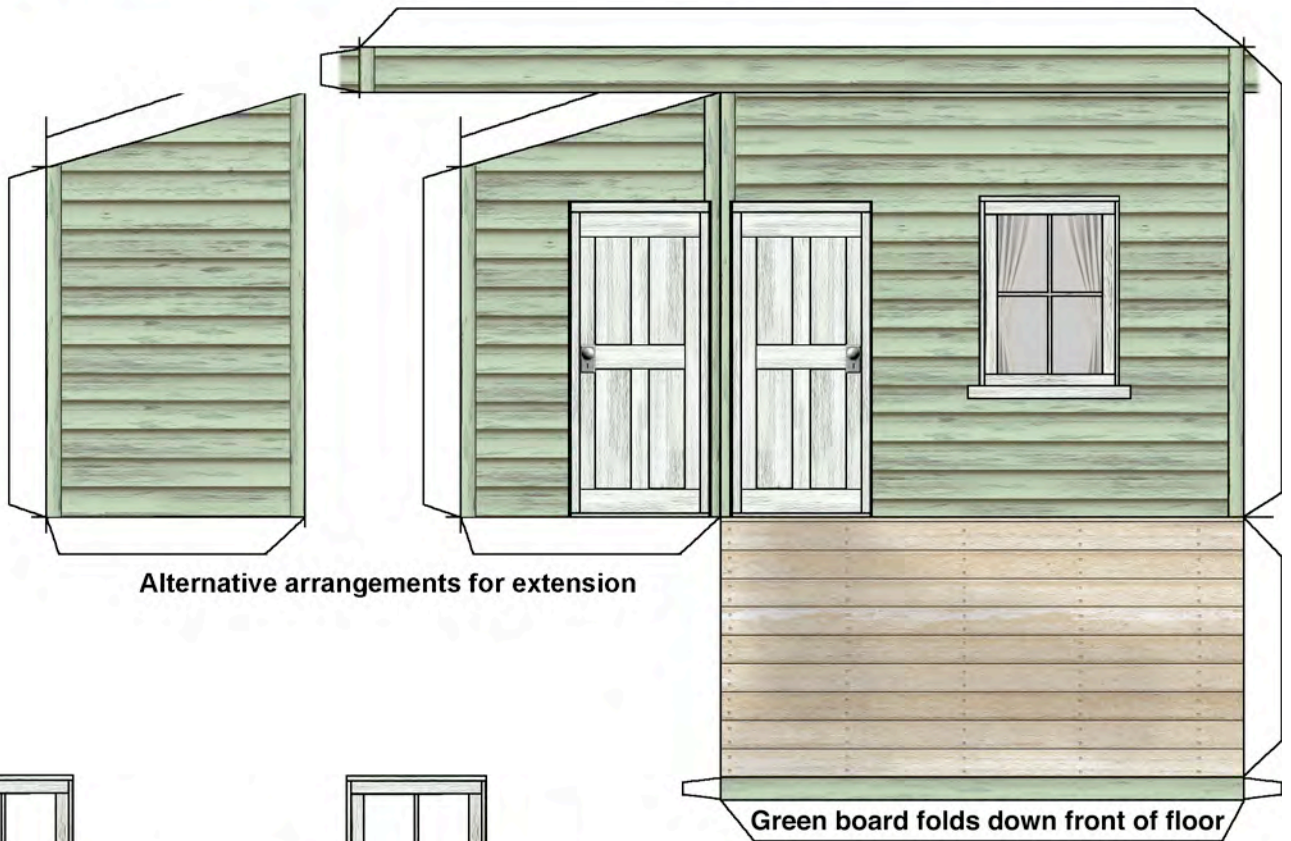
[www.zelmeroz.com/CaneSIG](http://www.zelmeroz.com/CaneSIG)

Kit includes textures sourced from Clever Models LLC: [www.clevermodels.net](http://www.clevermodels.net)

[www.narrowgagedownunder.com](http://www.narrowgagedownunder.com)

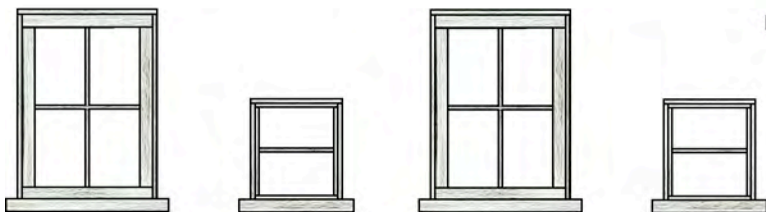


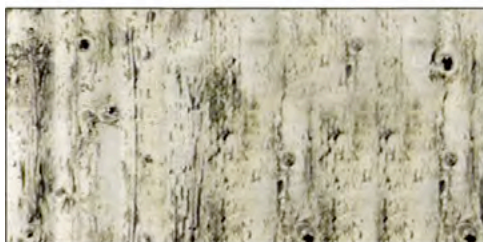
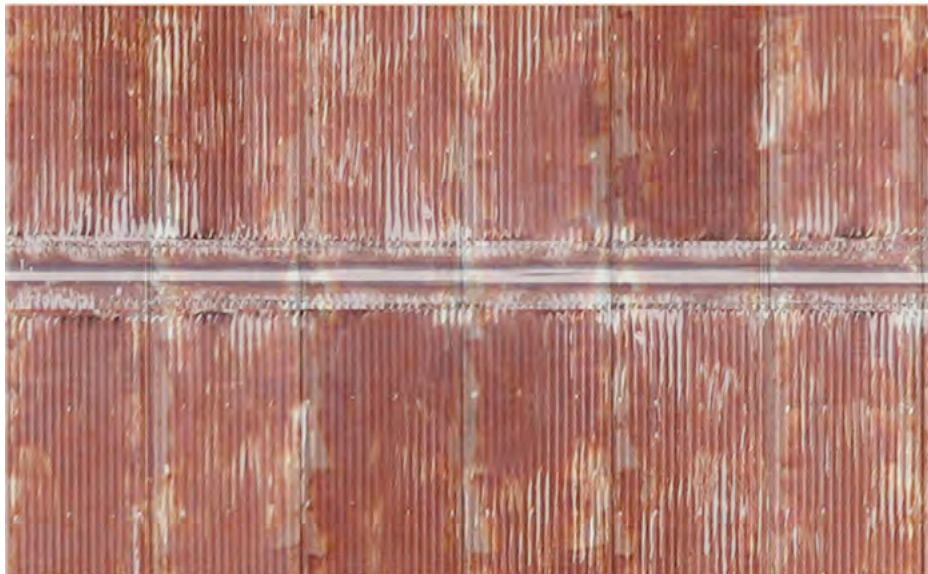
Green board folds down front of floor



Alternative arrangements for extension

Green board folds down front of floor





Top Board: bend glue tab under for mounting mounts at guide mark and flush with vertical cut. Bottom step



Glue tabs must be trimmed under side frame before gluing but will provide spacing guide. Bottom step

Timber stump material: cut to size and wrap around .25" dowel or rod before gluing.



Queensland Cottage kit inspired by Jim Fainges' Guldup Cottage drawings on the CaneSIG web site. Free download for non-commercial modelling use © Lynn Zelmer 2010. See my NGDU articles for more on modelling Queensland's sugar cane and shire railways.

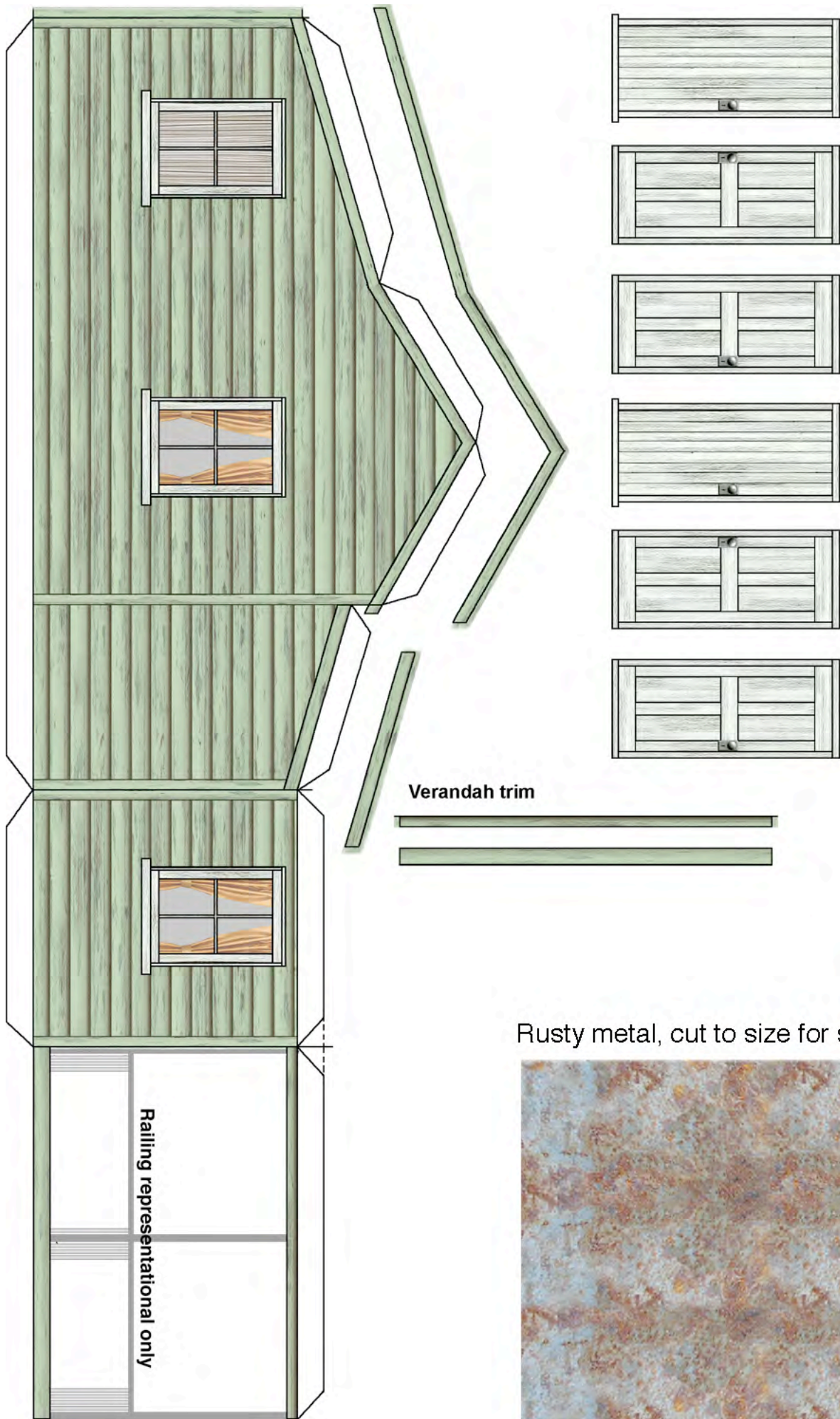


Queensland Cottage On30 (1:48)

[www.zelmeroz.com/CaneSIG](http://www.zelmeroz.com/CaneSIG)

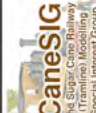

Kit includes textures sourced from Clever Models LLC: [www.clevermodels.net](http://www.clevermodels.net)

[www.narrowgagedownunder.com](http://www.narrowgagedownunder.com)



Rusty metal, cut to size for stump caps



Queensland Cottage kit inspired by Jim Fainges' Guldup  
 Cottage drawings on the CaneSIG web site. Free download  
 for non-commercial modelling use © Lynn Zelmer 2010. See  
 my NGDU articles for more on modelling Queensland's sugar cane and shire railways.

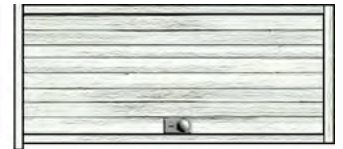
Kit includes textures sourced from  
 Clever Models LLC: [www.clevermodels.net](http://www.clevermodels.net)

[www.zelmeroz.com/CaneSIG](http://www.zelmeroz.com/CaneSIG)

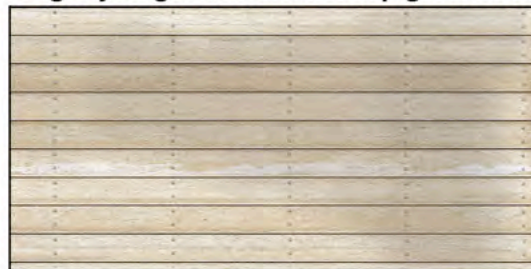
**Queensland Cottage**  
**On30 (1:48)**  
[www.narrowgaugeunder.com](http://www.narrowgaugeunder.com)



Front/rear roof trim ^, Verandah trim below



Slightly larger deck to overlap green trim



Queensland Cottage kit inspired by Jim Fainges' Guldup Cottage drawings on the CaneSIG web site. Free download for non-commercial modelling use © Lynn Zelmer 2010. See my NGDU articles for more on modelling Queensland's sugar cane and shire railways.



Queensland Cottage On30 (1:48)

[www.zelmeroz.com/CaneSIG](http://www.zelmeroz.com/CaneSIG)

Kit includes textures sourced from Clever Models LLC: [www.clevermodels.net](http://www.clevermodels.net)

[www.narrowgagedownunder.com](http://www.narrowgagedownunder.com)