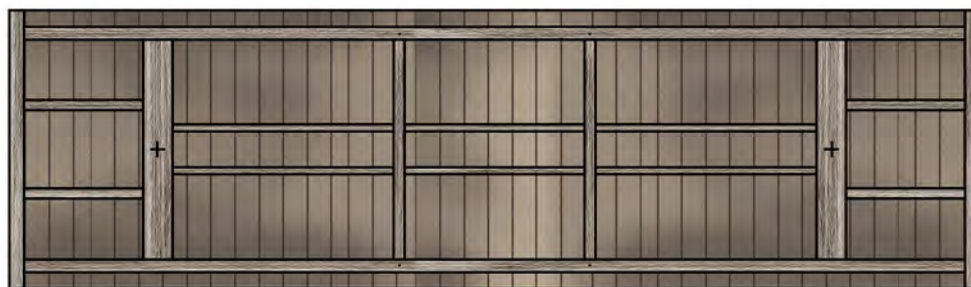
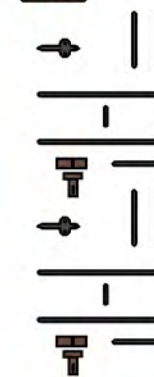




Use the side and end views above for detail location. Note solebar is partially hidden by side wall and wall top by roof overhang.



GUARD
GUARD



Trim underframe equally on sides/ends to fit inside side/end enclosure, ensuring pivot beam centred and square... ie. headstocks above will likely be replaced by headstock formed around end brace. Install soleplates, pivot beams and other timber ONLY AFTER underframe is trimmed to size.



Wrap around headstock for 3D/cover ends.



Glue tabs suggested only. Long tab on side can be folded under for glueing, or fold out and trim for vertical timber. Top and bottom of main wall must be folded/trimmed to fit.

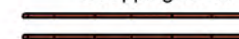


Doors with full hardware if not adding grabs, etc., as detail parts.

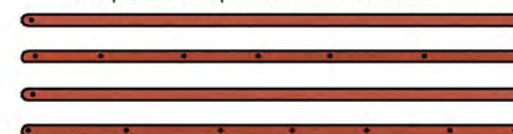
Pivot beams fold around double thickness matte board, trim to fit.



Strapping for door.



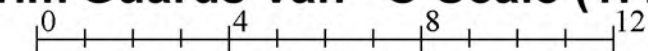
Hardware for sliding door below, pad behind with scrap card to represent channel iron.



Soleplates fold around matte board to form heavy timber. Trim both ends equally to fit inside headstocks.



Buderim Guards Van - O Scale (1:48)



Kit contains textures © Clever Models plc; CG Textures

QldRailHeritage.com/mrqc, © May 2014



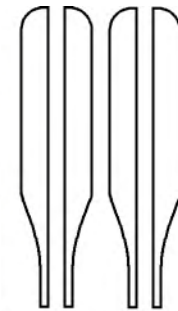
Modules above left for use if not intending to add handrail and other detail. Cut out door opening, above right, if doors will be open on model. Use scrap card to back sliding door guides for 3D effect. Separate door textures on sheet 1 have backing material included, so guide backing needed for remainder of guide.

Buderim Guards Van - O Scale (1:48)

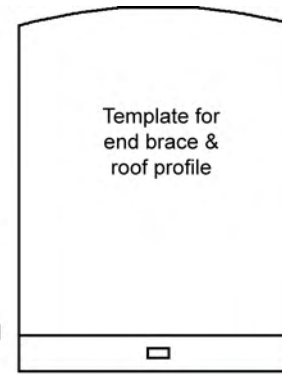
0 4 8 12
 Kit contains textures © Clever Models plc; CG Textures
QldRailHeritage.com/mrqc, © May 2014



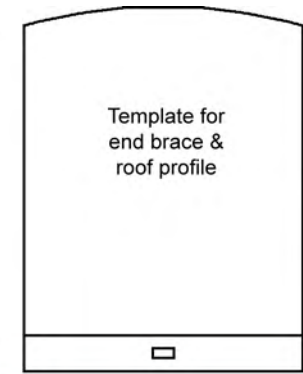
Roofing material: fold light side under, glue and trim to fit with roughly 6-8 scale inch overhang on all sides.



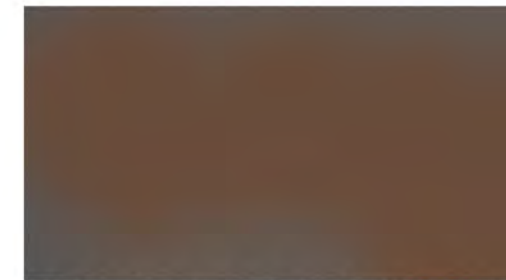
Template for guard extension bracing.



Template for end brace & roof profile



Template for end brace & roof profile



Sheet metal texture; use for underfloor angle iron bracing, wrapping pins for queenposts, etc.

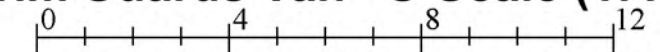


Bar stock: fold lengthwise on centre white line for 2 lengths double sided stock.



Underframe timbers need to fold/glue lengthwise around single thickness matte board to create timber length with texture on three sides. Cut to length as required.

Buderim Guards Van - O Scale (1:48)



Kit contains textures © Clever Models plc; CG Textures

QldRailHeritage.com/mrqc, © May 2014