



Rockhampton 360 Roundhouse

Railway Workshops | Environment

environment.ehp.qld.gov.au/heritage-register/detail/?id=601

Contact us

Industry

For Queenslanders > Environment, land and water > Land, housing and property > Heritage places

Search the register > Railway Workshops

Railway Workshops Print

600783 380 Bolsover Street, Depot Hill

[Return to search results](#)

General Significance **History** Description Gallery

The original workshops at Rockhampton were established in the late 1870s at the railway reserve area bounded by Denison, South, Campbell and Stanley Street. With a change of location in the early years of the 20th century, further development took place in the mid to late 1910s as part of a redevelopment of the entire railway infrastructure in Rockhampton. With many modifications and adaptations over time, the railway workshops continue to function as an operational railway workshop maintaining and repairing railway rolling stock.

...

The roundhouse was a purpose-built building, designed for the storage, servicing, and running maintenance of steam locomotives allocated to the Central Division based on Rockhampton. The building is significant as the only full circle roundhouse ever constructed in Queensland for the use of steam locomotives, and as one of the last surviving examples of such a building in Australia.

...

The railway workshops continues to function as an operational railway workshop maintaining and repairing railway rolling stock. Buildings are used for the repair of wagons, for the modification of wagons and locomotives and for general running maintenance....

Location

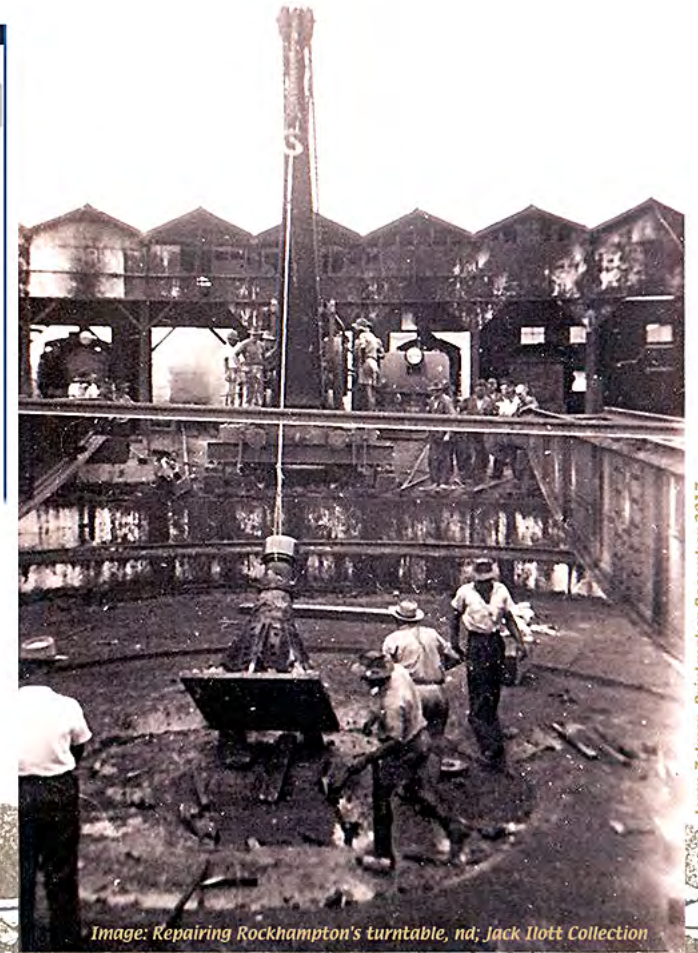
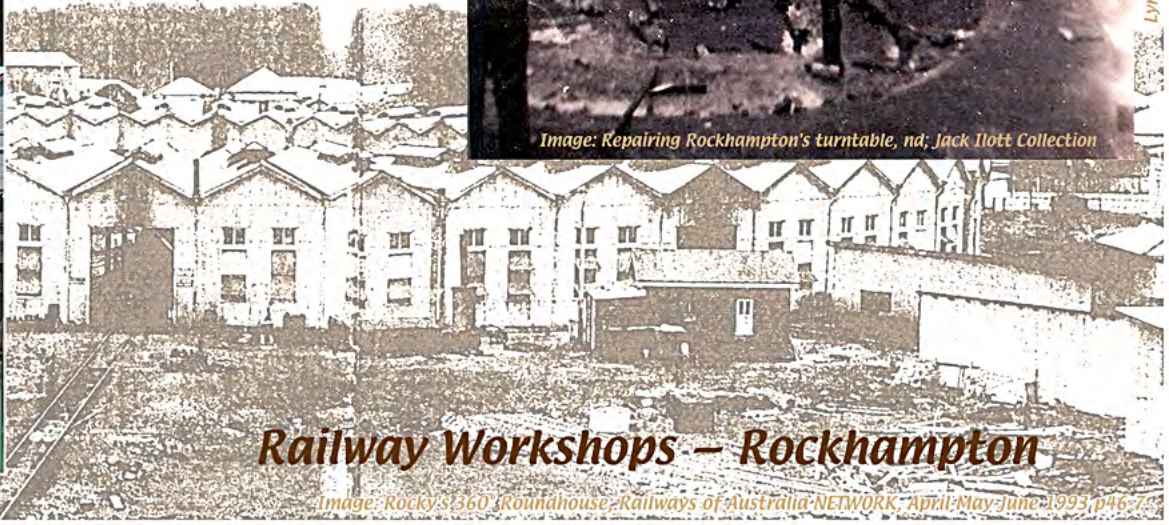


Image: Repairing Rockhampton's turntable, nd; Jack Ilott Collection

Lynn Zelmer, Printmaker December 2017



Railway Workshops – Rockhampton

Image: Rocky's 360 Roundhouse; Railways of Australia NETWORK, April-May-June-1993, p46-7

