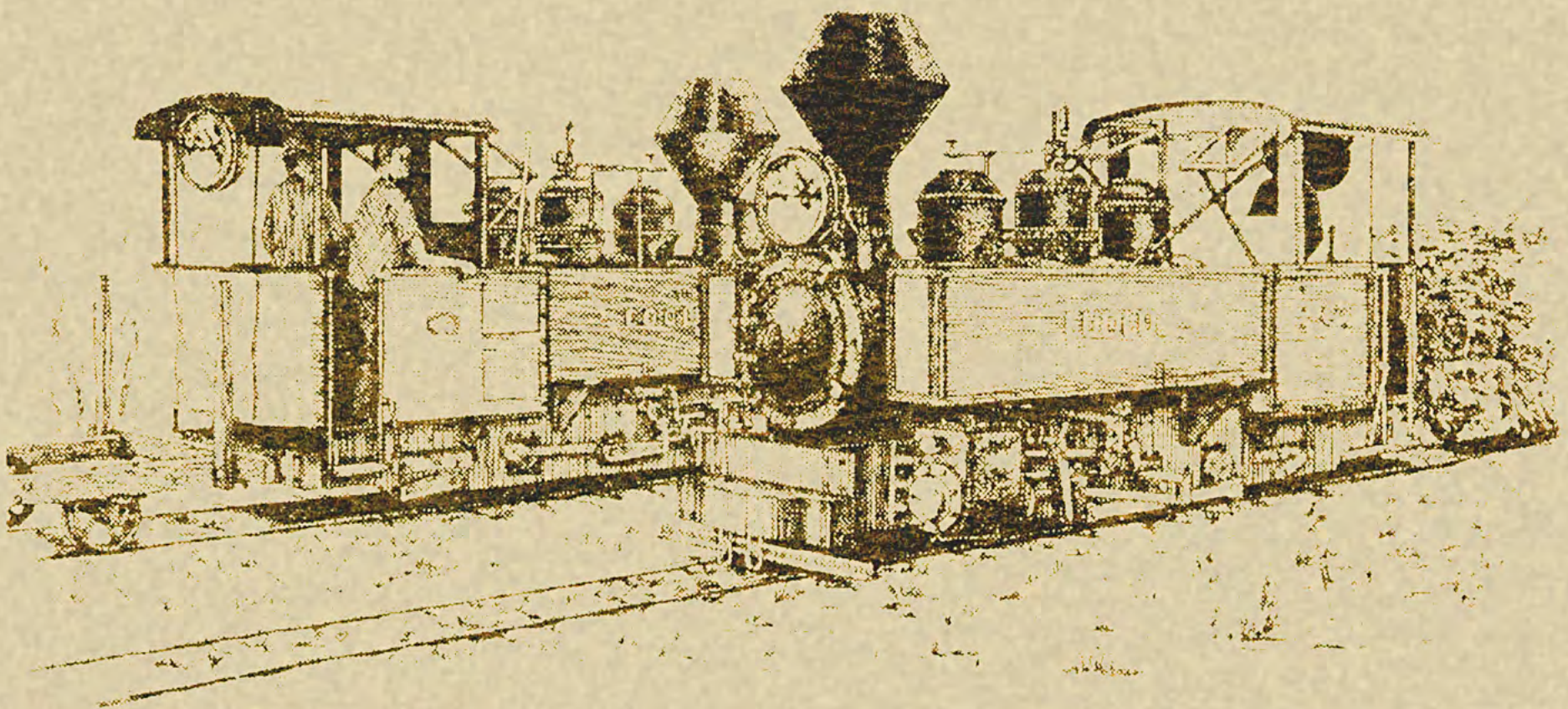


Australian Narrow Gauge Railway Museum Society

Queensland has the most modern and probably the largest quantity of 610mm gauge sugar railways in the world today. Far from being toys, these tramways or light railways provide an efficient method of getting cane from harvester to sugar mill and use the latest available technology to do it.

Trains of 1,500 tonnes are hauled on the better developed lines. Some of these lines are engineered to high standards with concrete sleepers, metal ballast, prestressed concrete or steel bridges and use roller bearing equipment with two way radio and global positioning for communication and control.

It was not always so, the sugar tramlines had a much more humble beginning with horses and tiny steam locomotives pioneering developments.



ANGRMS: www.angrms.org.au