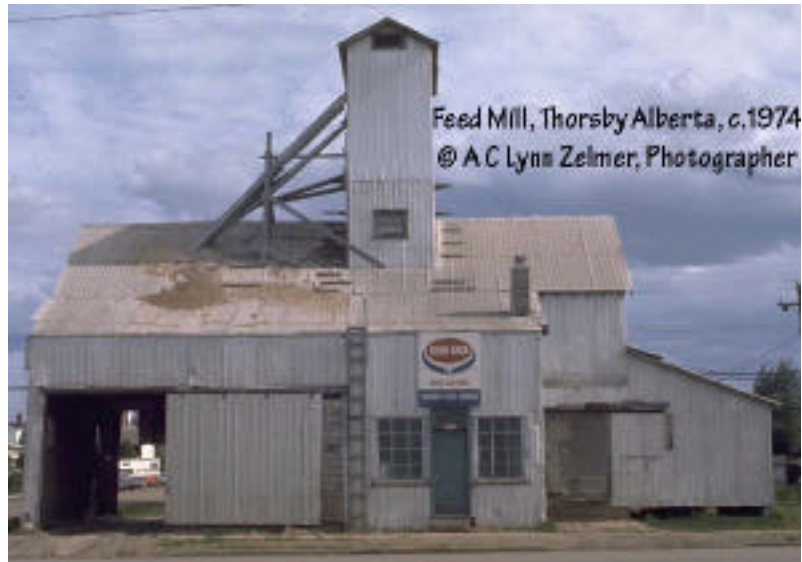


Thorsby Feed Mill

Thorsby is in a mixed farming area about an hour outside of Edmonton, the Provincial Capital of Alberta. Close to the foothills, it is on the edge of Canada's grain growing areas and has fairly severe winters.

Like most Alberta farming areas, off-farm incomes are required to survive. As Thorsby is just outside the present commuter zone for Edmonton, nearby oil and gas deposits likely provide the bulk of the employment and income for region residents.



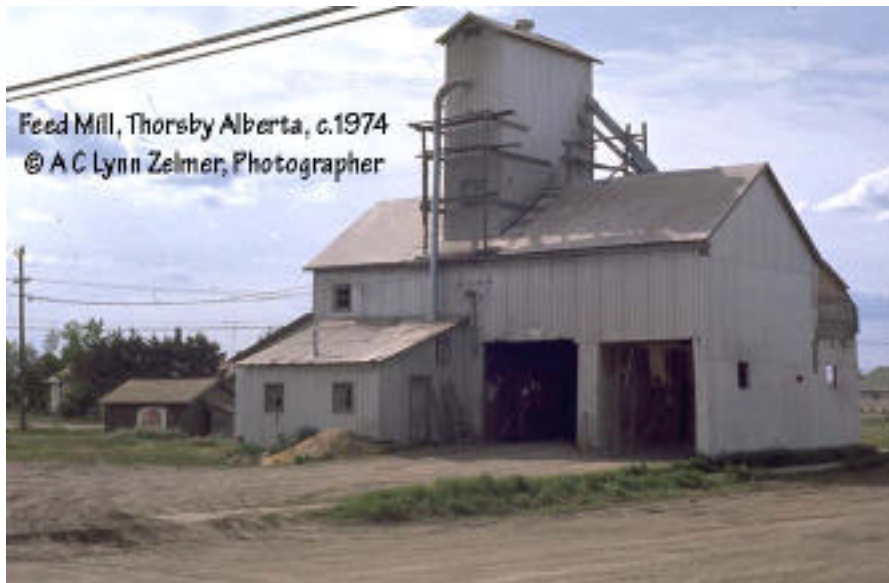
Front view with sales entrance and ladder to the roof.



Typical of such structures in Central Alberta, the mill is located close to a nearby branch railway line but it does not have a rail connection. However, as a model it could be located on a siding and receive several loads of grain and animal feed per week.



Alberta Railway Historical Projects: Thorsby Feed Mill



Feed Mill, Thorsby Alberta, c.1974
© A C Lynn Zelmer, Photographer



Feed Mill, Thorsby Alberta, c.1974
© A C Lynn Zelmer, Photographer

Feed Mill, Thorsby Alberta, c.1974
© A C Lynn Zelmer, Photographer



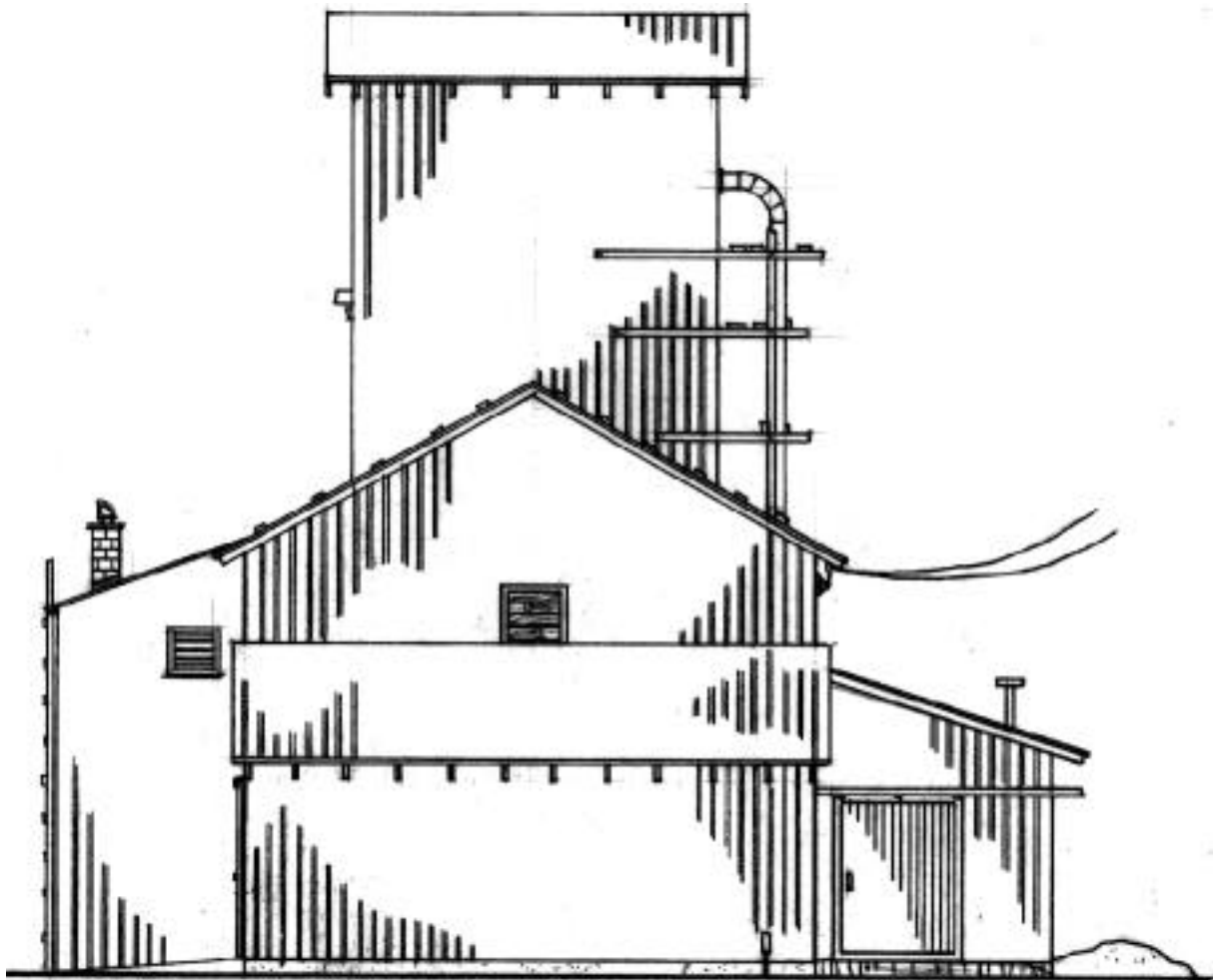
Feed Mill, Thorsby Alberta, c.1974
© A C Lynn Zelmer, Photographer

Alberta Railway Historical Projects

The Alberta Railway Historical Projects were my attempt to document railway history in Alberta. Unfortunately, commercial reality in the form of a need to generate income resulted in most of the information collected not being published.

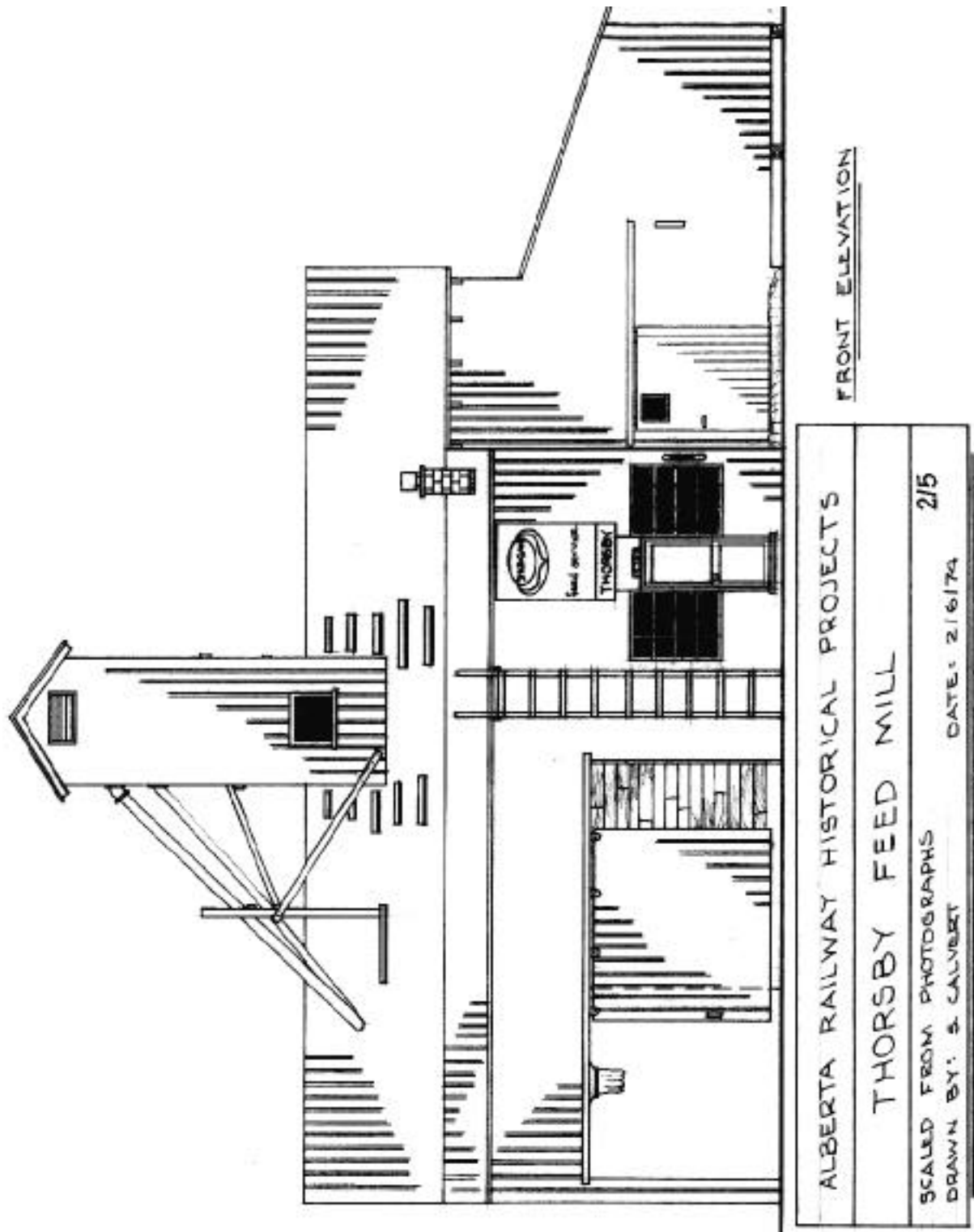
The Thorsby Feed Mill first came to my attention c 1970 as I was driving to and from a small rural property I owned outside of Edmonton. I took the photographs and Scott Calvert, the son of a close modelling colleague, drew the plans for HO use (3.5 mm = 1 ft).

I rediscovered both photos and plans when sorting out my files after moving to Australia. I don't know if Scott ever used the plans to build a model, I know that I haven't. However, the modelling possibilities are such that I felt the plans should not be lost, thus this article.

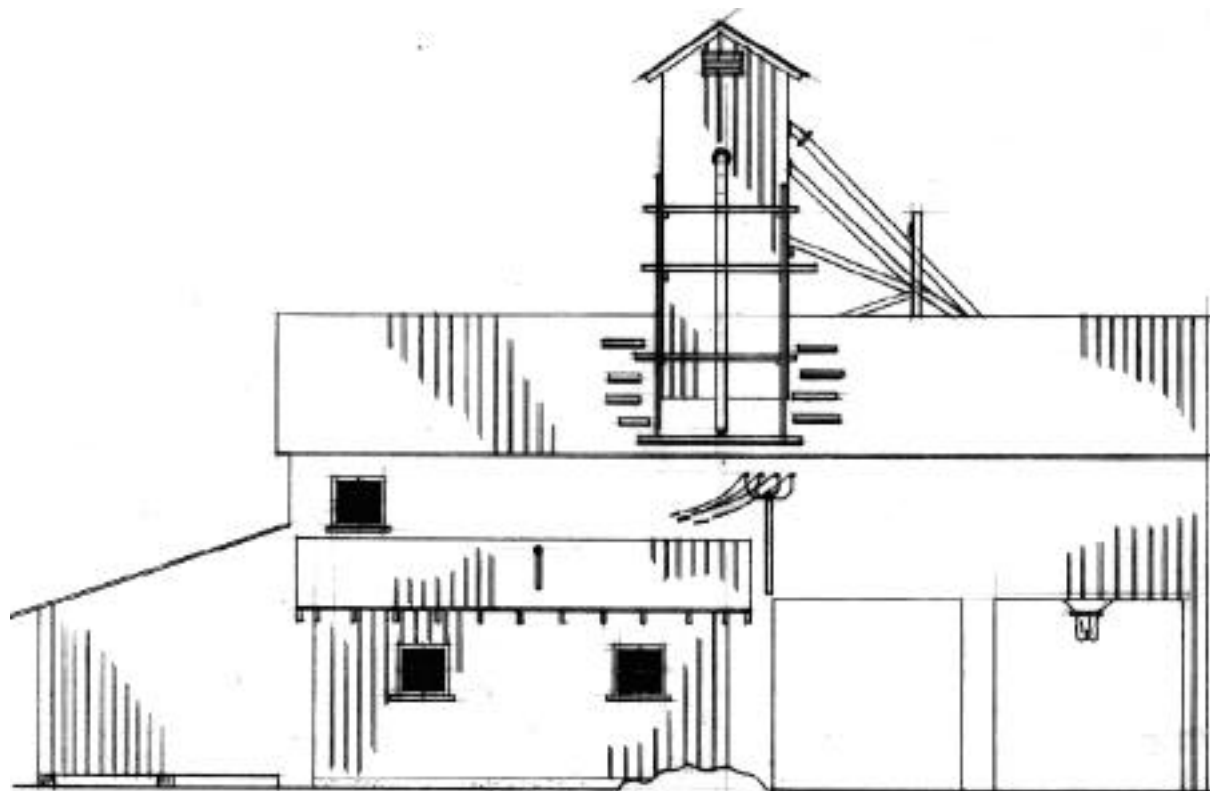


RIGHT ELEVATION

ALBERTA RAILWAY HISTORICAL PROJECTS	
THORSBY FEED MILL	
SCALED FROM PHOTOGRAPHS	1/5
DRAWN BY: S CALVERT	DATE: 2/6/74



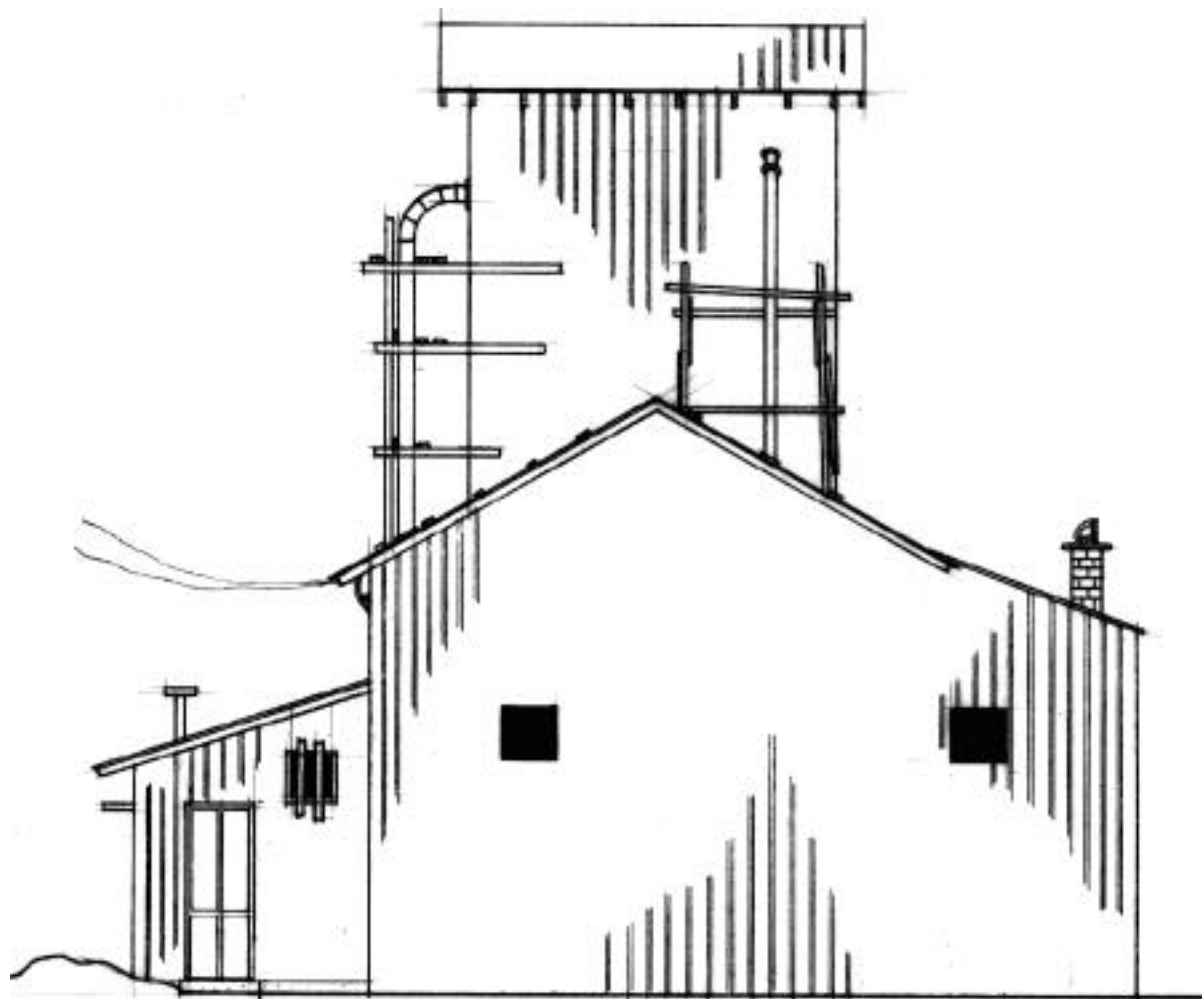
Alberta Railway Historical Projects: Thorsby Feed Mill



REAR ELEVATION

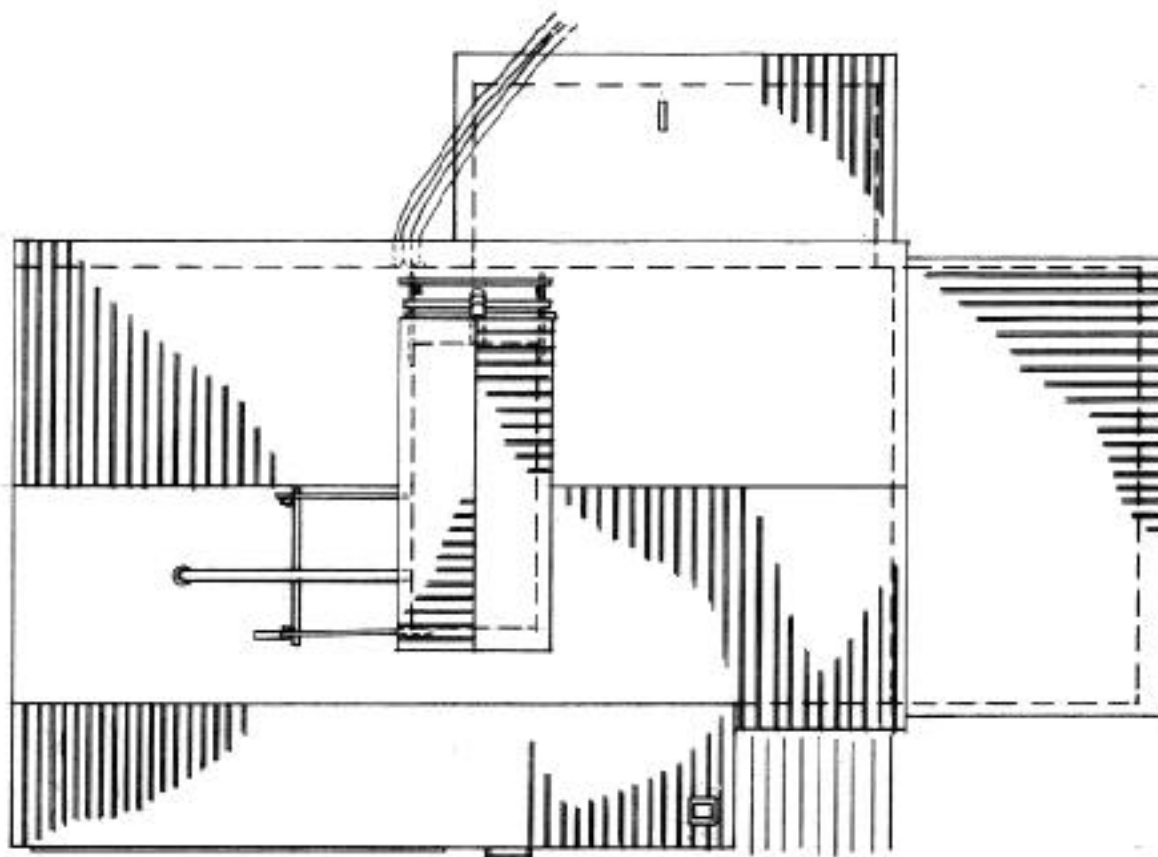
ALBERTA RAILWAY HISTORICAL PROJECTS	
THORSBY FEED MILL	
SCALED FROM PHOTOGRAPHS	3/5
DRAWN BY: S. CALVERT	DATE: 2/6/79

Alberta Railway Historical Projects: Thorsby Feed Mill



LEFT ELEVATION

ALBERTA RAILWAY HISTORICAL PROJECTS	
THORSBY FEED MILL	
SCALED FROM PHOTOGRAPHS	4/5
DRAWN BY: S. CALVERT	DATE: 2/6/74



TOP VIEW

ALBERTA RAILWAY HISTORICAL PROJECTS	
THORSBY FEED MILL	
SCALED FROM PHOTOGRAPHS	5/5
DRAWN BY: S. CALVERT	DATE: 2/6/74

Reproduction and use of this document

This document may be reproduced by individual modellers for non-commercial use provided credit is given to the photographer and draughtsman. Any other use requires the written consent. We would be quite interested in any use made of these photographs and drawings.

Best wishes in your modelling endeavours.

A C Lynn Zelmer, November 2000

lynn@zelmeroz.com

<http://www.zelmeroz.com>