

## Alberta Coal Branch: Elmer Holm, photographer

### Numerical Listing

- eh\_001 Wabamun, drag line for open pit coal mine; 1964. Elmer Holm, photographer
- eh\_002 Wabamun, large and small drag line shovels for open pit coal mine; 1964. Elmer Holm, photographer
- eh\_003 CNR trestle west of Edmonton, later converted to fill; 1964. Elmer Holm, photographer
- eh\_004 Robb tunnel; 1964. Elmer Holm, photographer
- eh\_005 Coalspur yard limit sign; 1964. Elmer Holm, photographer
- eh\_006 Mercoal, large mine building; 1964. Elmer Holm, photographer
- eh\_007 Mercoal, large mine building; 1964. Elmer Holm, photographer
- eh\_008 Mercoal, coal dump at mine; 1964. Elmer Holm, photographer
- eh\_009 Mercoal, coal dump at mine; 1964. Elmer Holm, photographer
- eh\_010 Mercoal, coal dump at mine; 1964. Elmer Holm, photographer
- eh\_011 Mercoal, coal dump at mine; 1964. Elmer Holm, photographer
- eh\_012 Mercoal, mine entry; 1964. Elmer Holm, photographer
- eh\_013 Mercoal, mine entry; 1964. Elmer Holm, photographer
- eh\_014 Mercoal, mine hoist machinery; 1964. Elmer Holm, photographer
- eh\_015 Mercoal, mine shed; 1964. Elmer Holm, photographer
- eh\_016 Mercoal, mine entry; 1964. Elmer Holm, photographer
- eh\_017 Mercoal, mine trackwork; 1964. Elmer Holm, photographer
- eh\_018 Mercoal, 4 wheel mine skip; 1964. Elmer Holm, photographer
- eh\_019 Mercoal, mine hoist shed; 1964. Elmer Holm, photographer
- eh\_021 Robb tunnel; 1964. Elmer Holm, photographer
- eh\_022 Robb tunnel; 1964. Elmer Holm, photographer
- eh\_024 Coalspur, yard; 1964. Elmer Holm, photographer
- eh\_025 Coalspur, yard; 1964. Elmer Holm, photographer
- eh\_026 Coalspur or Mercoal; 1964. Elmer Holm, photographer
- eh\_027 Coalspur, 4 wheel mine skips; 1964. Elmer Holm, photographer
- eh\_028 Coalspur, roundhouse remains; 1964. Elmer Holm, photographer
- eh\_029 Robb tunnel; 1964. Elmer Holm, photographer
- eh\_030 Hinton?, CN 880200; nd. Elmer Holm, photographer
- eh\_031 Coalspur, CN 4332 and 4344, gravel [ballast?] train with spreader; c 1974. Elmer Holm, photographer
- eh\_032 Hinton?, CN 125648; c 1974. Elmer Holm, photographer
- eh\_033 Coalspur area?, CN 53133; c 1974. Elmer Holm, photographer
- eh\_034 Coalspur, wye; c 1974. Elmer Holm, photographer
- eh\_035 Coalspur, CN 4332 and 4344, gravel [ballast?] train with spreader; c 1974. Elmer Holm, photographer
- eh\_036 Coalspur, CN 4332 and 4344, gravel [ballast?] train with spreader; c 1974. Elmer Holm, photographer
- eh\_037 Coalspur, CN 4332 and 4344, gravel [ballast?] train with spreader; c 1974. Elmer Holm, photographer
- eh\_038 Coalspur, CNR 50942 spreader, pulled by CN 4344 and 4332; c 1974. Elmer Holm, photographer

## Alberta Coal Branch: Elmer Holm, photographer

- eh\_039 Coal Branch, CN 5246, 5117 and ? hauling coal, c 1977. Elmer Holm, photographer
- eh\_040 Coal Branch, CN 5246, 5117 and ? hauling coal, c 1977. Elmer Holm, photographer
- eh\_041 Coal Branch, CN gondolas [with coal load?], c 1975-7. Elmer Holm, photographer
- eh\_042 Coal Branch, CN gondolas [with coal load?], c 1975-7. Elmer Holm, photographer
- eh\_043 Coal Branch, CN caboose with ballast train, c 1975. Elmer Holm, photographer
- eh\_044 Coal Branch, CN 4337 and 4322 with ballast train, c 1975. Elmer Holm, photographer
- eh\_045 Coal Branch, CN 4337 and 4322 with ballast train, c 1975. Elmer Holm, photographer
- eh\_046 Coalspur, CN 4332 and 4344 with gravel [ballast?] train, c 1974. Elmer Holm, photographer
- eh\_101 Mercoal, mine hoist cable; 1964. Elmer Holm, photographer
- eh\_102 Mercoal, mine hoist cable; 1964. Elmer Holm, photographer
- eh\_103 Mercoal, mine hoist machinery; 1964. Elmer Holm, photographer
- eh\_104 Mercoal, building [school or church?]; 1964. Elmer Holm, photographer
- eh\_105 Mercoal, house; 1964. Elmer Holm, photographer
- eh\_106 Mercoal, grocery store; 1964. Elmer Holm, photographer
- eh\_107 Mercoal, CN station; 1964. Elmer Holm, photographer
- eh\_108 Mercoal, store; 1964. Elmer Holm, photographer
- eh\_109 Mercoal, house; 1964. Elmer Holm, photographer
- eh\_110 Mercoal, house; 1964. Elmer Holm, photographer
- eh\_111 Mercoal, Coal Branch Motors [still in use]; 1964. Elmer Holm, photographer
- eh\_112 Mercoal, house; 1964. Elmer Holm, photographer
- eh\_113 Foothills, 4300 series loco sign; 1964. Elmer Holm, photographer
- eh\_114 Forestry Road, road grader with concrete wheel; 1964. Elmer Holm, photographer
- eh\_115 Foothills, loco water stand; 1964. Elmer Holm, photographer
- eh\_116 Foothills, loco water stand; 1964. Elmer Holm, photographer
- eh\_117 Foothills, loco water stand; 1964. Elmer Holm, photographer
- eh\_118 Coalspur, 4 wheel coal skip; 1964. Elmer Holm, photographer
- eh\_119 Coalspur, 4 wheel coal skip coupling; 1964. Elmer Holm, photographer
- eh\_120 Coalspur, mine entry; 1964. Elmer Holm, photographer
- eh\_121 Coalspur, mine building; 1964. Elmer Holm, photographer
- eh\_122 Coalspur, mine building; 1964. Elmer Holm, photographer
- eh\_123 Coalspur, mine building; 1964. Elmer Holm, photographer
- eh\_124 Coalspur, mine building; 1964. Elmer Holm, photographer
- eh\_125 Coalspur, building; 1964. Elmer Holm, photographer
- eh\_126 Coalspur, trestle bridge; 1964. Elmer Holm, photographer
- eh\_127 Coalspur, standard switch stand; 1964. Elmer Holm, photographer
- eh\_128 Coalspur, garage; 1964. Elmer Holm, photographer
- eh\_129 Coalspur, store; 1964. Elmer Holm, photographer
- eh\_130 Coalspur, station; 1964. Elmer Holm, photographer

## Alberta Coal Branch: Elmer Holm, photographer

- eh\_131 Coalspur, town view with station in foreground; 1964. Elmer Holm, photographer
- eh\_132 Mercoal line, coal loading; 1964. Elmer Holm, photographer
- eh\_133 Mercoal, mine track and 4 wheel skip; 1964. Elmer Holm, photographer
- eh\_134 Hinton, Abandoned mine off road near; 1964. Elmer Holm, photographer
- eh\_135 Hinton; nd. Elmer Holm, photographer
- eh\_136 Mercoal, 4 wheel mine skip; 1964. Elmer Holm, photographer
- eh\_137 Wabamun, open pit coal mine; 1964. Elmer Holm, photographer
- eh\_138 Wabamun, drag line for open pit coal mine; 1964. Elmer Holm, photographer
- eh\_139 Wabamun, drag line for open pit coal mine; 1964. Elmer Holm, photographer
- eh\_140 Wabamun, drag line shovel for open pit coal mine; 1964. Elmer Holm, photographer
- eh\_141 Wabamun, drag line for open pit coal mine; 1964. Elmer Holm, photographer
- eh\_142 Wabamun, drag line for open pit coal mine; 1964. Elmer Holm, photographer

### Location Listing

- eh\_003 CNR trestle west of Edmonton, later converted to fill; 1964. Elmer Holm, photographer
- eh\_044 Coal Branch, CN 4337 and 4322 with ballast train, c 1975. Elmer Holm, photographer
- eh\_045 Coal Branch, CN 4337 and 4322 with ballast train, c 1975. Elmer Holm, photographer
- eh\_039 Coal Branch, CN 5246, 5117 and ? hauling coal, c 1977. Elmer Holm, photographer
- eh\_040 Coal Branch, CN 5246, 5117 and ? hauling coal, c 1977. Elmer Holm, photographer
- eh\_043 Coal Branch, CN caboose with ballast train, c 1975. Elmer Holm, photographer
- eh\_041 Coal Branch, CN gondolas [with coal load?], c 1975-7. Elmer Holm, photographer
- eh\_042 Coal Branch, CN gondolas [with coal load?], c 1975-7. Elmer Holm, photographer
- eh\_033 Coalspur area?, CN 53133; c 1974. Elmer Holm, photographer
- eh\_026 Coalspur or Mercoal; 1964. Elmer Holm, photographer
- eh\_005 Coalspur yard limit sign; 1964. Elmer Holm, photographer
- eh\_119 Coalspur, 4 wheel coal skip coupling; 1964. Elmer Holm, photographer
- eh\_118 Coalspur, 4 wheel coal skip; 1964. Elmer Holm, photographer
- eh\_027 Coalspur, 4 wheel mine skips; 1964. Elmer Holm, photographer
- eh\_125 Coalspur, building; 1964. Elmer Holm, photographer
- eh\_046 Coalspur, CN 4332 and 4344 with gravel [ballast?] train, c 1974. Elmer Holm, photographer
- eh\_031 Coalspur, CN 4332 and 4344, gravel [ballast?] train with spreader; c 1974. Elmer Holm, photographer
- eh\_035 Coalspur, CN 4332 and 4344, gravel [ballast?] train with spreader; c 1974. Elmer Holm, photographer

## Alberta Coal Branch: Elmer Holm, photographer

- eh\_036 Coalspur, CN 4332 and 4344, gravel [ballast?] train with spreader; c 1974. Elmer Holm, photographer
- eh\_037 Coalspur, CN 4332 and 4344, gravel [ballast?] train with spreader; c 1974. Elmer Holm, photographer
- eh\_038 Coalspur, CNR 50942 spreader, pulled by CN 4344 and 4332; c 1974. Elmer Holm, photographer
- eh\_128 Coalspur, garage; 1964. Elmer Holm, photographer
- eh\_121 Coalspur, mine building; 1964. Elmer Holm, photographer
- eh\_122 Coalspur, mine building; 1964. Elmer Holm, photographer
- eh\_123 Coalspur, mine building; 1964. Elmer Holm, photographer
- eh\_124 Coalspur, mine building; 1964. Elmer Holm, photographer
- eh\_120 Coalspur, mine entry; 1964. Elmer Holm, photographer
- eh\_028 Coalspur, roundhouse remains; 1964. Elmer Holm, photographer
- eh\_127 Coalspur, standard switch stand; 1964. Elmer Holm, photographer
- eh\_130 Coalspur, station; 1964. Elmer Holm, photographer
- eh\_129 Coalspur, store; 1964. Elmer Holm, photographer
- eh\_131 Coalspur, town view with station in foreground; 1964. Elmer Holm, photographer
- eh\_126 Coalspur, trestle bridge; 1964. Elmer Holm, photographer
- eh\_034 Coalspur, wye; c 1974. Elmer Holm, photographer
- eh\_024 Coalspur, yard; 1964. Elmer Holm, photographer
- eh\_025 Coalspur, yard; 1964. Elmer Holm, photographer
- eh\_113 Foothills, 4300 series loco sign; 1964. Elmer Holm, photographer
- eh\_115 Foothills, loco water stand; 1964. Elmer Holm, photographer
- eh\_116 Foothills, loco water stand; 1964. Elmer Holm, photographer
- eh\_117 Foothills, loco water stand; 1964. Elmer Holm, photographer
- eh\_114 Forestry Road, road grader with concrete wheel; 1964. Elmer Holm, photographer
- eh\_134 Hinton, Abandoned mine off road near; 1964. Elmer Holm, photographer
- eh\_135 Hinton; nd. Elmer Holm, photographer
- eh\_032 Hinton?, CN 125648; c 1974. Elmer Holm, photographer
- eh\_030 Hinton?, CN 880200; nd. Elmer Holm, photographer
- eh\_132 Mercoal line, coal loading; 1964. Elmer Holm, photographer
- eh\_018 Mercoal, 4 wheel mine skip; 1964. Elmer Holm, photographer
- eh\_136 Mercoal, 4 wheel mine skip; 1964. Elmer Holm, photographer
- eh\_104 Mercoal, building [school or church?]; 1964. Elmer Holm, photographer
- eh\_107 Mercoal, CN station; 1964. Elmer Holm, photographer
- eh\_111 Mercoal, Coal Branch Motors [still in use]; 1964. Elmer Holm, photographer
- eh\_008 Mercoal, coal dump at mine; 1964. Elmer Holm, photographer
- eh\_009 Mercoal, coal dump at mine; 1964. Elmer Holm, photographer
- eh\_010 Mercoal, coal dump at mine; 1964. Elmer Holm, photographer
- eh\_011 Mercoal, coal dump at mine; 1964. Elmer Holm, photographer
- eh\_106 Mercoal, grocery store; 1964. Elmer Holm, photographer
- eh\_105 Mercoal, house; 1964. Elmer Holm, photographer
- eh\_109 Mercoal, house; 1964. Elmer Holm, photographer
- eh\_110 Mercoal, house; 1964. Elmer Holm, photographer

## **Alberta Coal Branch: Elmer Holm, photographer**

- eh\_112 Mercoal, house; 1964. Elmer Holm, photographer
- eh\_006 Mercoal, large mine building; 1964. Elmer Holm, photographer
- eh\_007 Mercoal, large mine building; 1964. Elmer Holm, photographer
- eh\_012 Mercoal, mine entry; 1964. Elmer Holm, photographer
- eh\_013 Mercoal, mine entry; 1964. Elmer Holm, photographer
- eh\_016 Mercoal, mine entry; 1964. Elmer Holm, photographer
- eh\_101 Mercoal, mine hoist cable; 1964. Elmer Holm, photographer
- eh\_102 Mercoal, mine hoist cable; 1964. Elmer Holm, photographer
- eh\_014 Mercoal, mine hoist machinery; 1964. Elmer Holm, photographer
- eh\_103 Mercoal, mine hoist machinery; 1964. Elmer Holm, photographer
- eh\_019 Mercoal, mine hoist shed; 1964. Elmer Holm, photographer
- eh\_015 Mercoal, mine shed; 1964. Elmer Holm, photographer
- eh\_133 Mercoal, mine track and 4 wheel skip; 1964. Elmer Holm, photographer
- eh\_017 Mercoal, mine trackwork; 1964. Elmer Holm, photographer
- eh\_108 Mercoal, store; 1964. Elmer Holm, photographer
- eh\_004 Robb tunnel; 1964. Elmer Holm, photographer
- eh\_021 Robb tunnel; 1964. Elmer Holm, photographer
- eh\_022 Robb tunnel; 1964. Elmer Holm, photographer
- eh\_029 Robb tunnel; 1964. Elmer Holm, photographer
- eh\_001 Wabamun, drag line for open pit coal mine; 1964. Elmer Holm, photographer
- eh\_138 Wabamun, drag line for open pit coal mine; 1964. Elmer Holm, photographer
- eh\_139 Wabamun, drag line for open pit coal mine; 1964. Elmer Holm, photographer
- eh\_141 Wabamun, drag line for open pit coal mine; 1964. Elmer Holm, photographer
- eh\_142 Wabamun, drag line for open pit coal mine; 1964. Elmer Holm, photographer
- eh\_140 Wabamun, drag line shovel for open pit coal mine; 1964. Elmer Holm, photographer
- eh\_002 Wabamun, large and small drag line shovels for open pit coal mine; 1964. Elmer Holm, photographer
- eh\_137 Wabamun, open pit coal mine; 1964. Elmer Holm, photographer

## **Contact Sheets by Numerical Listing**

Alberta Coal Branch: Elmer Holm, photographer



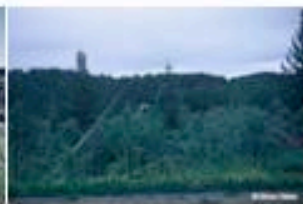
F1000001.jpg



F1000002.jpg



F1000003.jpg



F1000004.jpg



F1000005.jpg



F1000006.jpg



F1000007.jpg



F1000008.jpg



F1000009.jpg



F1000010.jpg



F1000011.jpg



F1000012.jpg



F1000013.jpg



F1000014.jpg



F1000015.jpg



F1000016.jpg



F1000017.jpg



F1000018.jpg



F1000019.jpg



F1000021.jpg



F1000022.jpg



F1000024.jpg



F1000025.jpg



F1000026.jpg

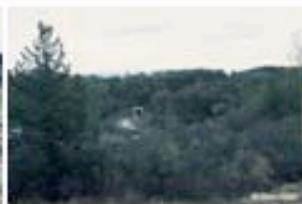
Alberta Coal Branch: Elmer Holm, photographer



F1000027.jpg



F1000028.jpg



F1000029.jpg



F1000030.jpg



F1000031.jpg



F1000032.jpg



F1000033.jpg



F1000034.jpg



F1000035.jpg



F1000036.jpg



F1000037.jpg



F1000038.jpg



F1000039.jpg



F1000040.jpg



F1000041.jpg



F1000042.jpg



F1000043.jpg



F1000044.jpg



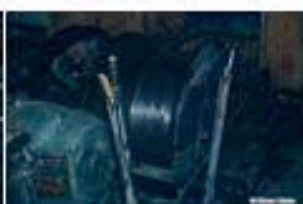
F1000045.jpg



F1000046.jpg



F1010001.jpg



F1010002.jpg



F1010003.jpg



F1010004.jpg

Alberta Coal Branch: Elmer Holm, photographer



F1010005.jpg



F1010006.jpg



F1010007.jpg



F1010008.jpg



F1010009.jpg



F1010010.jpg



F1010011.jpg



F1010012.jpg



F1010013.jpg



F1010014.jpg



F1010015.jpg



F1010016.jpg



F1010017.jpg



F1010018.jpg



F1010019.jpg



F1010020.jpg



F1010021.jpg



F1010022.jpg



F1010023.jpg



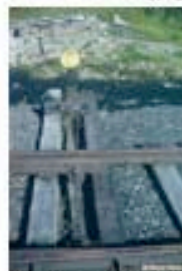
F1010024.jpg



F1010025.jpg



F1010026.jpg



F1010027.jpg



F1010028.jpg



Alberta Coal Branch: Elmer Holm, photographer



F1010029.jpg



F1010030.jpg



F1010031.jpg



F1010032.jpg



F1010033.jpg



F1010034.jpg



F1010035.jpg



F1010036.jpg



F1010037.jpg



F1010038.jpg



F1010039.jpg



F1010040.jpg



F1010041.jpg



F1010042.jpg