

"DREAMWORLD" 4-6-0

Bruce Macdonald

On page 24 our first issue we run a photograph of the well known 4-6-0 locomotive that currently runs at Queensland's Dreamworld. Mr Bruce Macdonald of Canberra sent the accompanying photograph and enclosed the following letter, which throws some interesting light onto the colourful history of this engine.

This loco was built by the Baldwin locomotive works of Pennsylvania, U.S.A. as part of a total order for 495 identical locomotives for the British War Department for use on light, semi-permanent 60cm gauge lines in the actual war zone during the 1914-1918 conflict. They were ordered in March 1916 and were delivered between October of that year and April 1917.

It took two years from the outbreak of the war for the British to realise that narrow wheeled horse vehicles, cumbersome steam traction engines and primitive motor lorries were impractical for maintaining supply lines in the war zone conditions. The German system of light railways,

established in their war office policy even before the war, was proving embarrassingly effective.

After the war large numbers of surplus locomotives were disposed of to various industrial narrow gauge railways throughout the world. However, as built, they were 4-6-0 tank locomotives and it was in that form that they survived their working lives.

Baldwin No. 45215, one of the last delivered, was initially given War Department number 1083 and later renumbered to 634. Around 1920 it was purchased by the Racecourse Co-operative Sugar Milling Company located near Mackay Queensland, for use on their lines. By 1963 it was rendered redundant by the new diesel locos and so was discarded behind the mill with other locos.

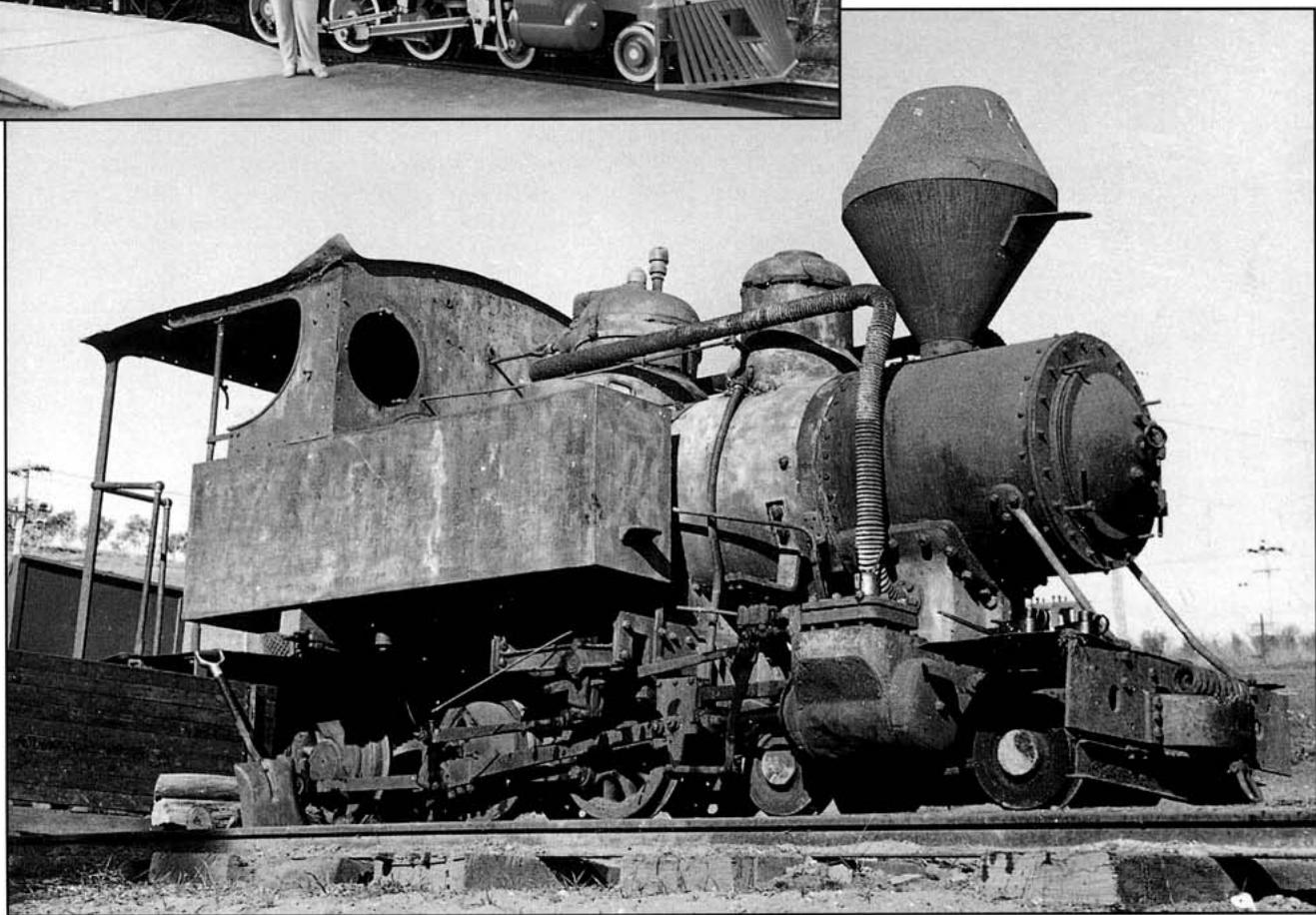
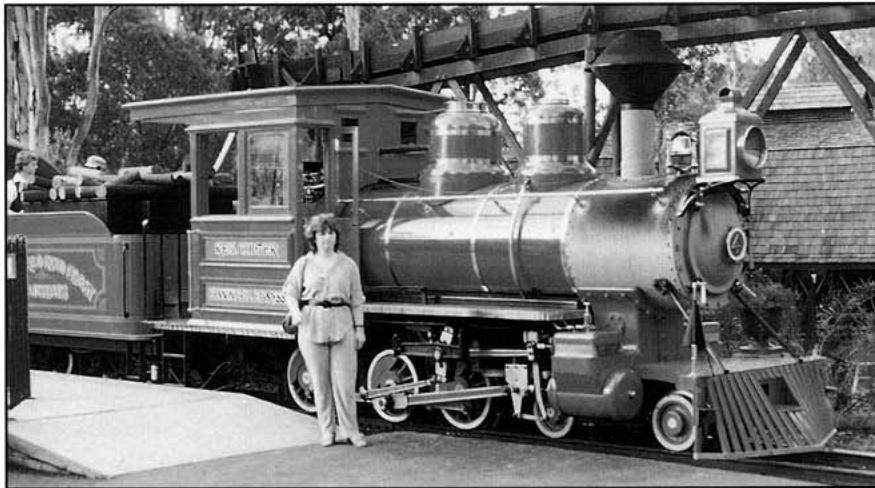
It was purchased by myself in 1972 and transported to Goulburn (New South Wales) for eventual use on a museum type railway. However, prior to its' restoration it was spotted by Mr John Longhurst who told me about his plans for the proposed "Dreamworld", and I was persuaded to part with the loco.

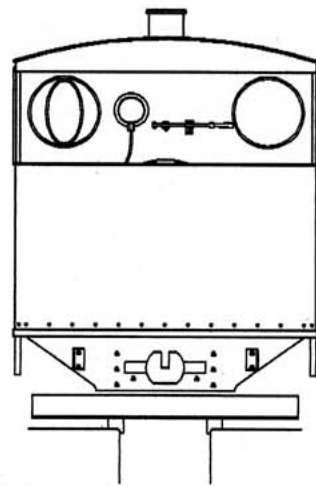
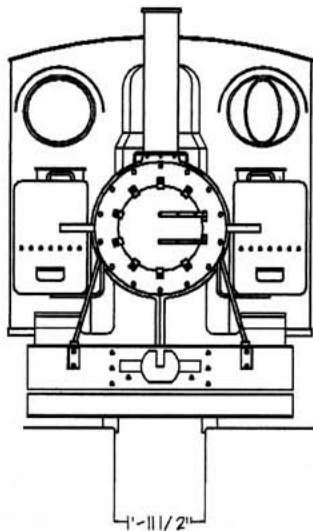
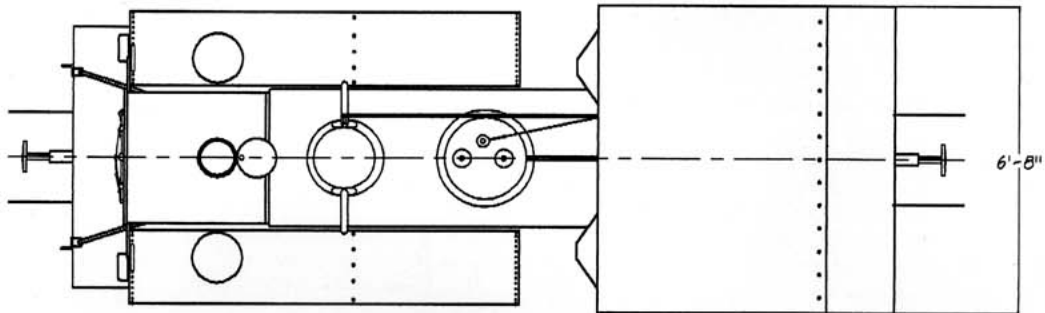
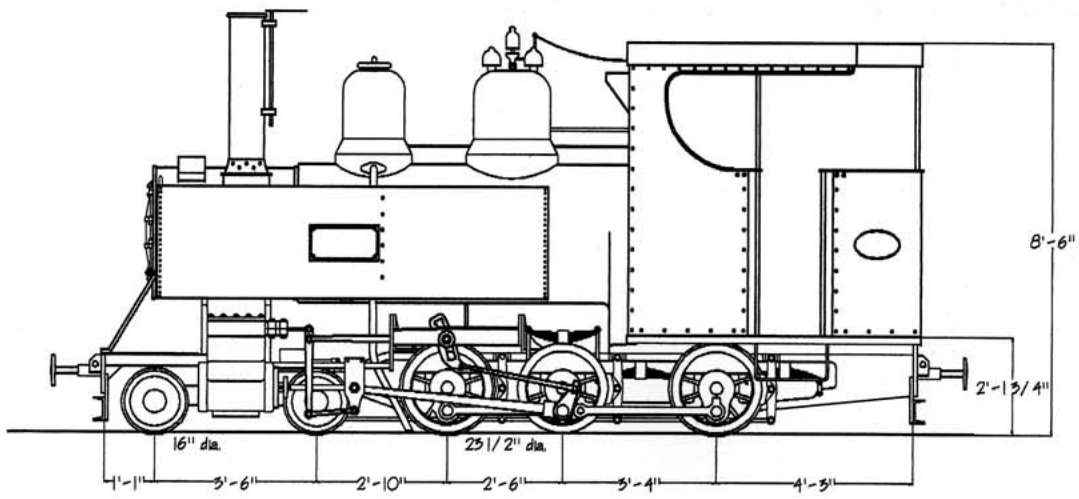
The 4-6-0 was then professionally overhauled in Sydney and superficially rebuilt as a 4-6-0 tender engine in the style of an American 1880's loco..

The photograph shows the locomotive as I purchased it in 1972. The external steam pipes had been added at some point during it's time at the sugar mills.

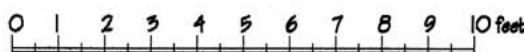
Photo at left; Tony Walsham

Photo below; Bruce Macdonald





Baldwin Class 10-12-D 4-6-0T built for the British War Department 1917.



Full size for 1/4 inch scale. 1:48

Drawing by Peter Manning © 1997

Cylinder (2) 9" Dia x 12" stroke
 Boiler pressure 178 psi
 Heating surface 254 sq. ft.
 Tank capacity 476 U.S. Gallons
 Tractive effort
 90% of boiler pressure 5622 lbs
 75% of boiler pressure 5398 lbs