

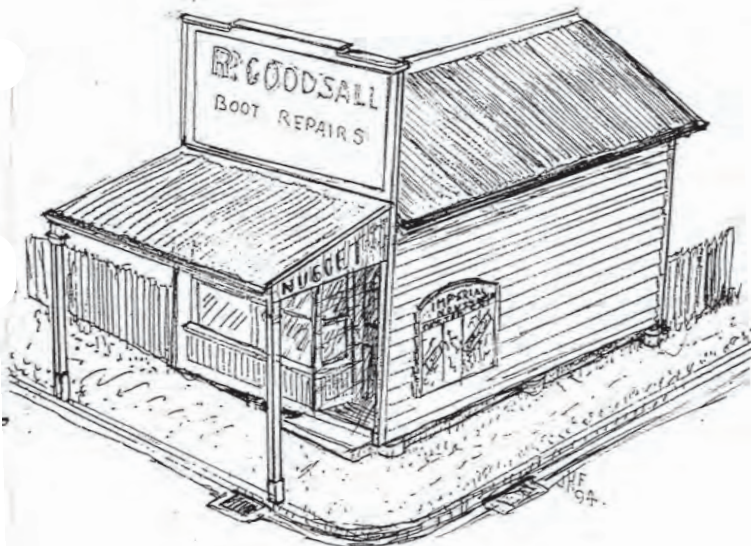
Floor Plan

Scale 1/4 inch = 1 foot



# BOOTMAKERS SHOP

design by Jim Fainges 1994 digitized April 2008

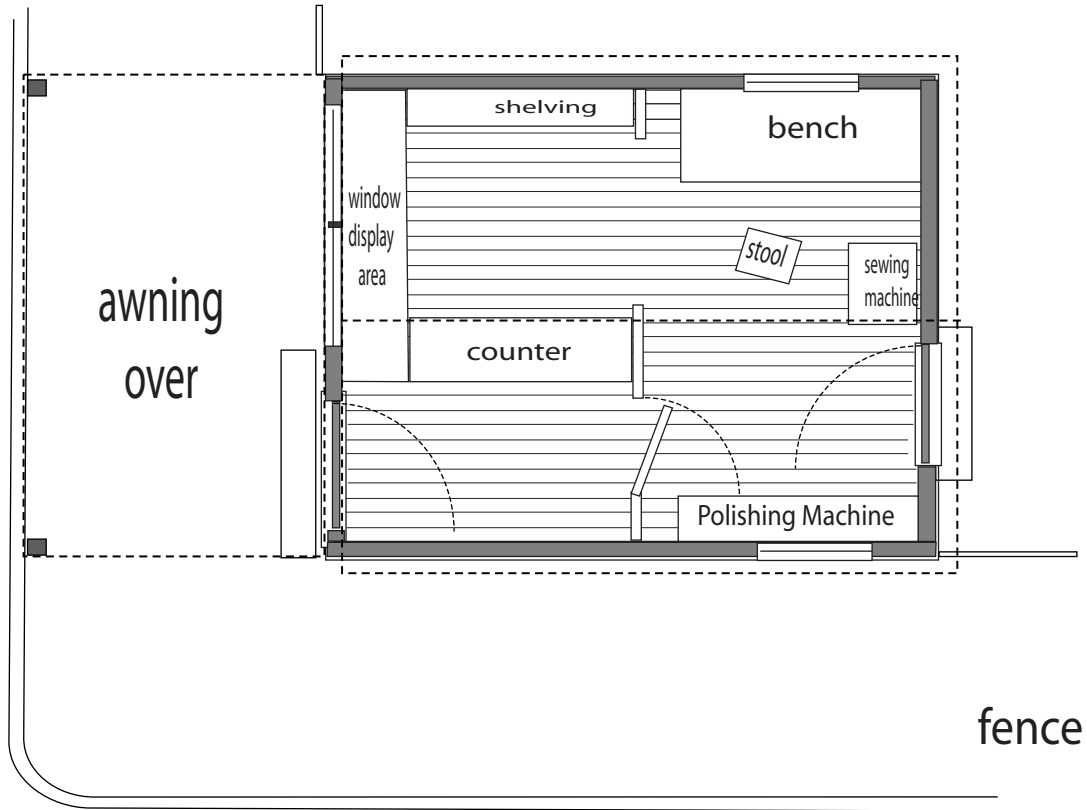


This small shop stood on the corner of Truo & Stonleigh Streets Lutwyche. from the 1930s through to the 1960s The story behind this shop is interesting in that during the Depression men were out of work and finding any way of obtaining income to support the family was necessary.

Bob Goodsall was a bookmaker who had lost his job and as my father ( a builder) was also out of work so they decided to combine their talents, Using the materials they had or could afford , build a shop for Bob on the corner of his property..

These drawings are made from a sketch I found years ago when I was going through my fathers papers and from my own memory of what I can recall of the structure and look of the shop

# Boot Repairer



rCnr Truo & Stonleigh streets Windsor

PLAN

Scale 1/4 inch = 1 foot 1:48

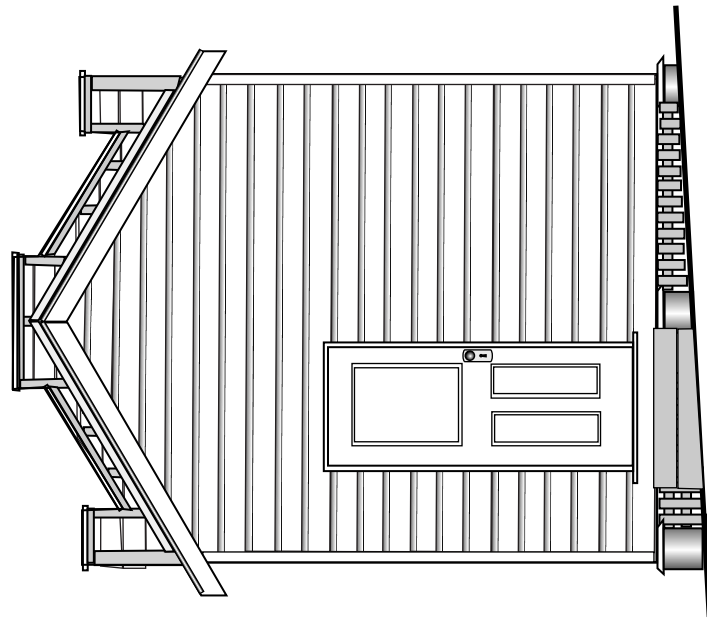
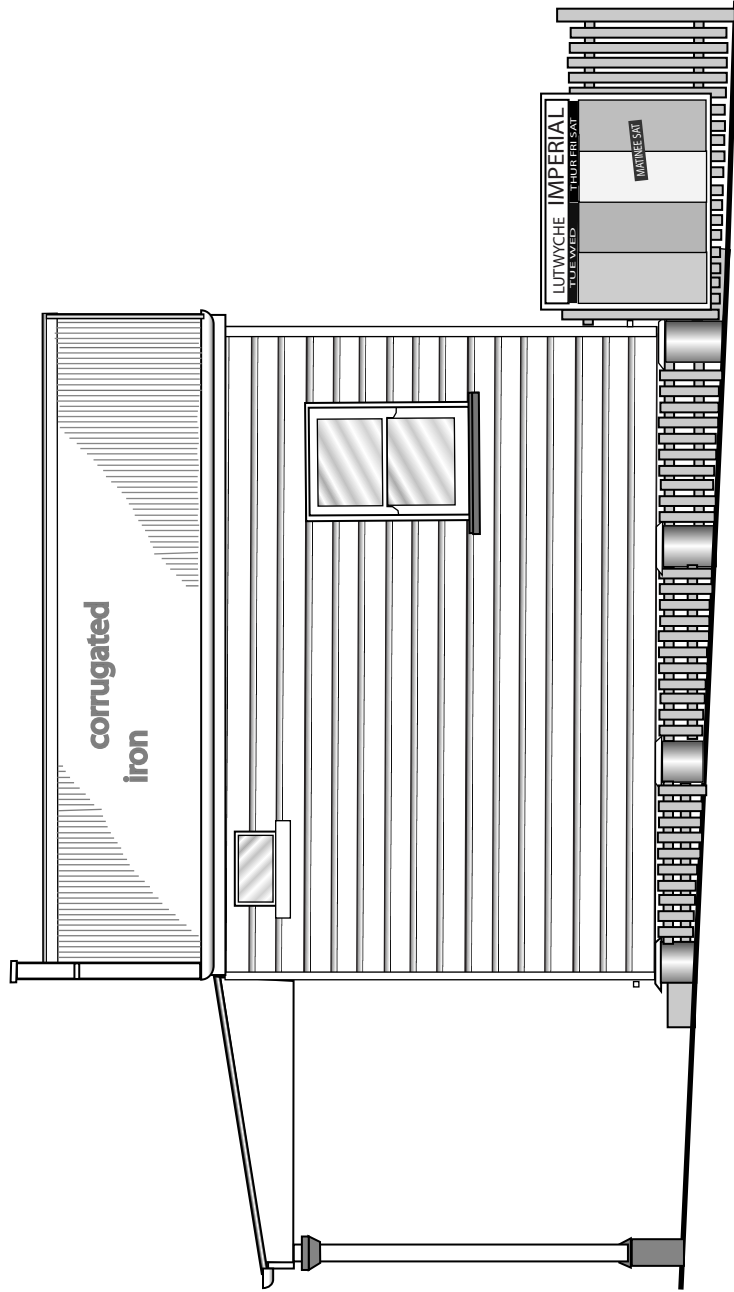
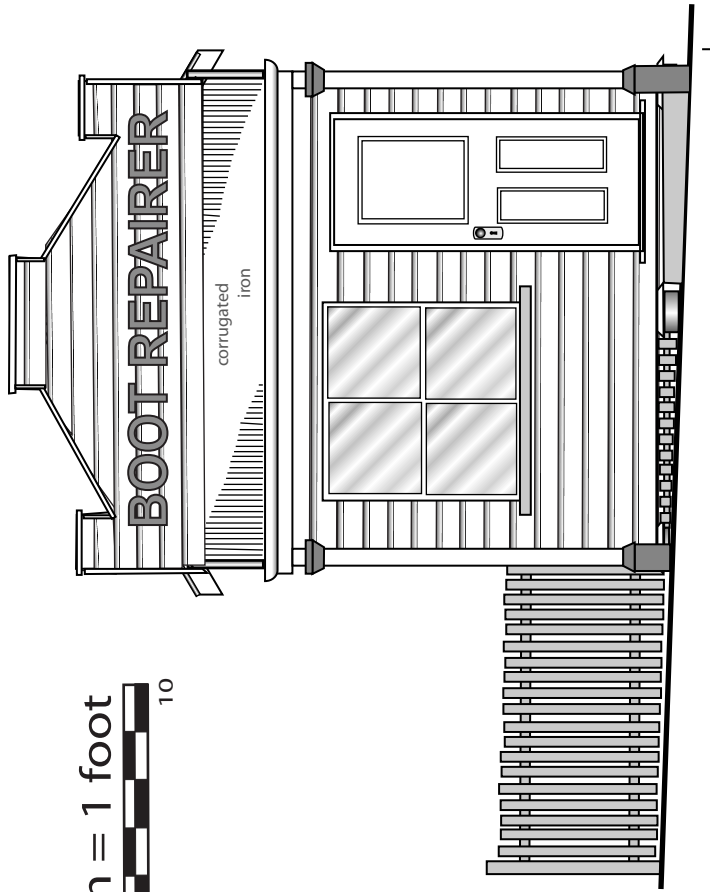
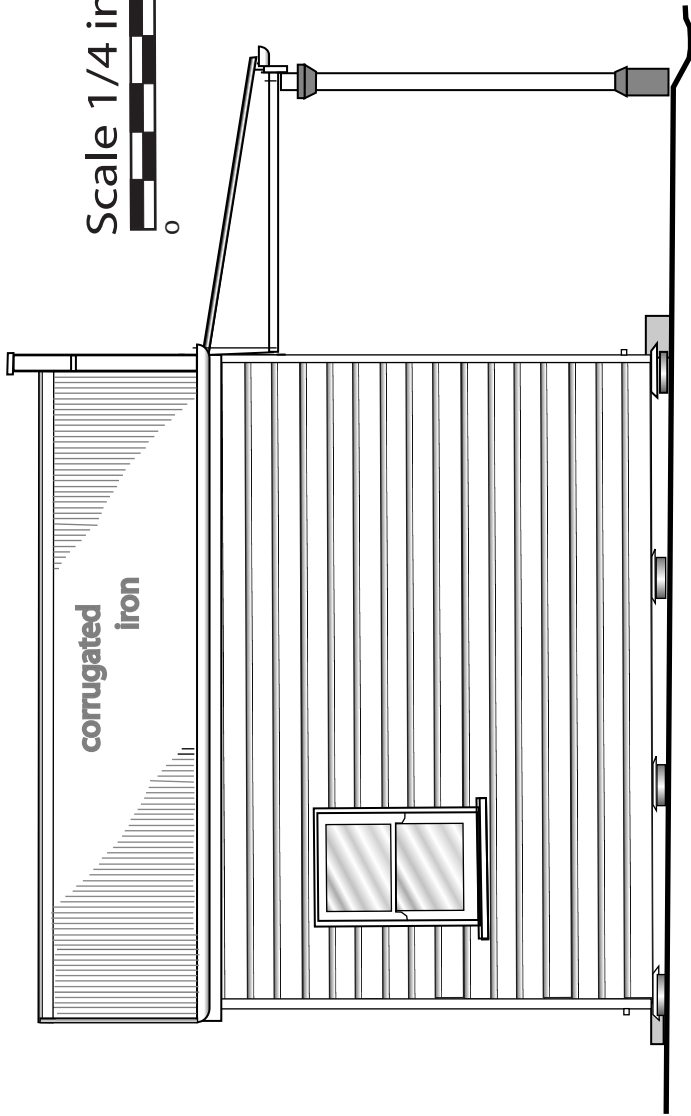


**The story continues:-**

This photo was found at the Grangr library 1n 2005 taken it appears in the late 1930's Just goes to show there is a difference between memory and research J H F



Scale 1/4 inch = 1 foot



# Bootrepaireer

"O" Scale

Sheet 1

